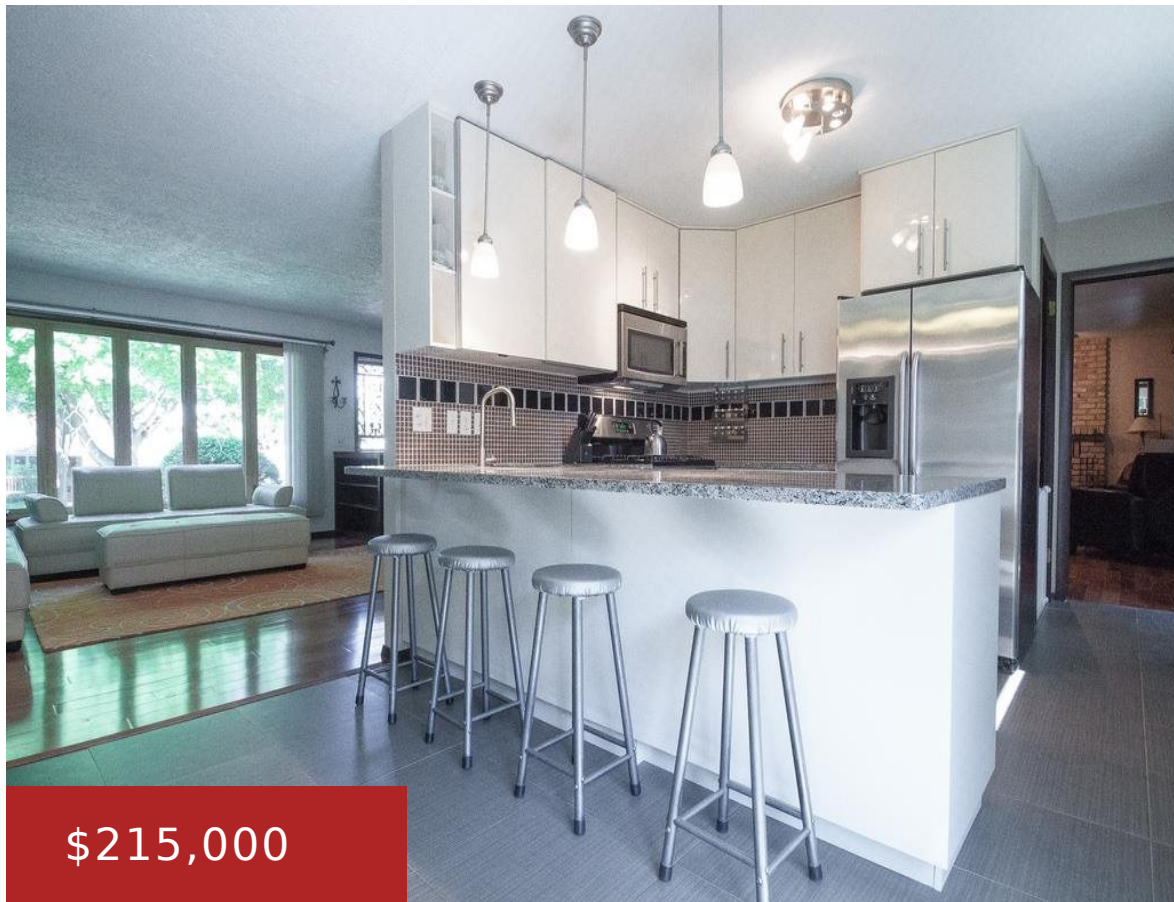


2701 DRYDEN DRIVE, MADISON, WI, 53704

https://www.adashunjones.com

2701 Dryden Drive,
Madison, WI, 53704



Great updates showcase this lovely home’s features: an open, modern kitchen w/granite counters, breakfast bar and stainless appliances, sunny living room with picture window and wood floors, spacious, fully-finished lower level with a bar, remodeled bath with granite and beautiful fixtures, a large, lush yard with a patio and so much more. This is definitely...

- 3 beds
- 1 bath
- Res
- Sold
- 1932 sq ft



Shelly Sprinkman
Sprinkman Real Estate



Features

GarageYN: Yes

FireplaceYN: Yes

Lot Features: Corner Lot, Near Public Transit

Features: Accessible Bedroom, Accessible Doors, Accessible Full Bath, Accessible Hallway(s), Breakfast Bar, Cable Available, Lower Level, Water softener inc, Wood Burning

Below Grade Finished Area, sq ft: 532

Tax Amount: 4106

AttachedGarageYN: Yes

PoolPrivateYN: No

Utilities: Cable Available

Above Grade Finished Area, sq ft: 1400

Tax Year: 2013

Inclusions: Some Window Coverings

Amenities

Waterfront available: No

Cooling:
Central Air

Amenities: Dishwasher, Disposal, Microwave, Range, Refrigerator, Water Softener Owned

Water Source:
Public

Sewer: Public Sewer

Building Details

NewConstructionYN: No

Basement: Finished, Full

Parking: Attached, Garage Door Opener, Paved

Heating: Forced Air, Natural Gas

Exterior material: Brick, Stone

Agent Details

Agent Full Name: Shelly Sprinkman

Agent Email: shelly@sprinkmanrealestate.com