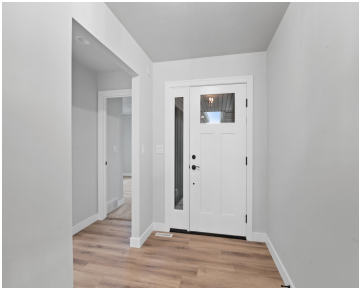


# 2581 WILLOW COURT, GREEN BAY, WI, 54311

<https://www.adashunjones.com>

2581 WILLOW  
Court, Green Bay,  
WI, 54311



• 1522 sq ft

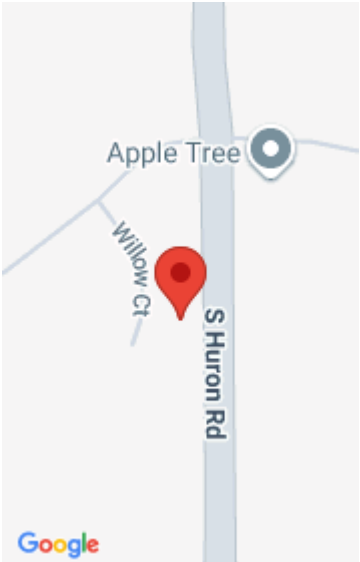
This brand new Anton Model, has all the amenities you are looking for! This open concept zero-step entry home welcomes you with an oversized great room, a gas fireplace and a full appliance kitchen with high quality finishing touches. This home features a split bedroom plan and a designated dining area integrated into the open...



**Brittney**  
Kos Realty Group



**Ryan**  
Kos Realty Group



---

## Features

**Price per sq ft:** \$275.89

**Lot Size, acres:** 0.19

**For Sale or Rent:** For Sale

**Architectural Style:** Ranch

**GarageYN:** No

**Heating:** Central A/C

**PoolPrivateYN:** No

**Lot Features:** Cul-De-Sac

**Amenities:** Dishwasher, Disposal, Microwave, Range/Oven, Refrigerator

**Water Source:** Municipal/City

**Tax Amount:** \$365.95

**Area, sq ft:** 1,522 sq ft

**Year built:** 2024

**Garage Spaces:** 2

**Parcel Number:** B-2912

**AttachedGarageYN:** No

**FireplaceYN:** No

**ExteriorFeatures:** Patio

**Features:** Gas, Kitchen Island, One, Pantry, Split Bedroom, Vaulted Ceiling, Walk-in Closet(s), Walk-in Shower

**Above Grade Finished Area, sq ft:** 1522

**Sewer:** Municipal Sewer

---

## Room Sizes

Main Level Bedroom 1 14x13 Bedroom 2 11x11 Kitchen 14x09 Living Or Great Room 17x17 Dining Room 11x11 Other Room 06x06 Other Room 2 08x06

---

## Building Details

**NewConstructionYN:** Yes

**Basement:** Full, Full Sz Windows Min 20x24, Stubbed for Bath

**Exterior Material:** Patio, Stone, Vinyl **Parking:** Attached

---

## Agent Details

**Agent Full Name:** Brittney M Kleifgen

**Agent Email:** bkleifgen@kosrealtygroup.com