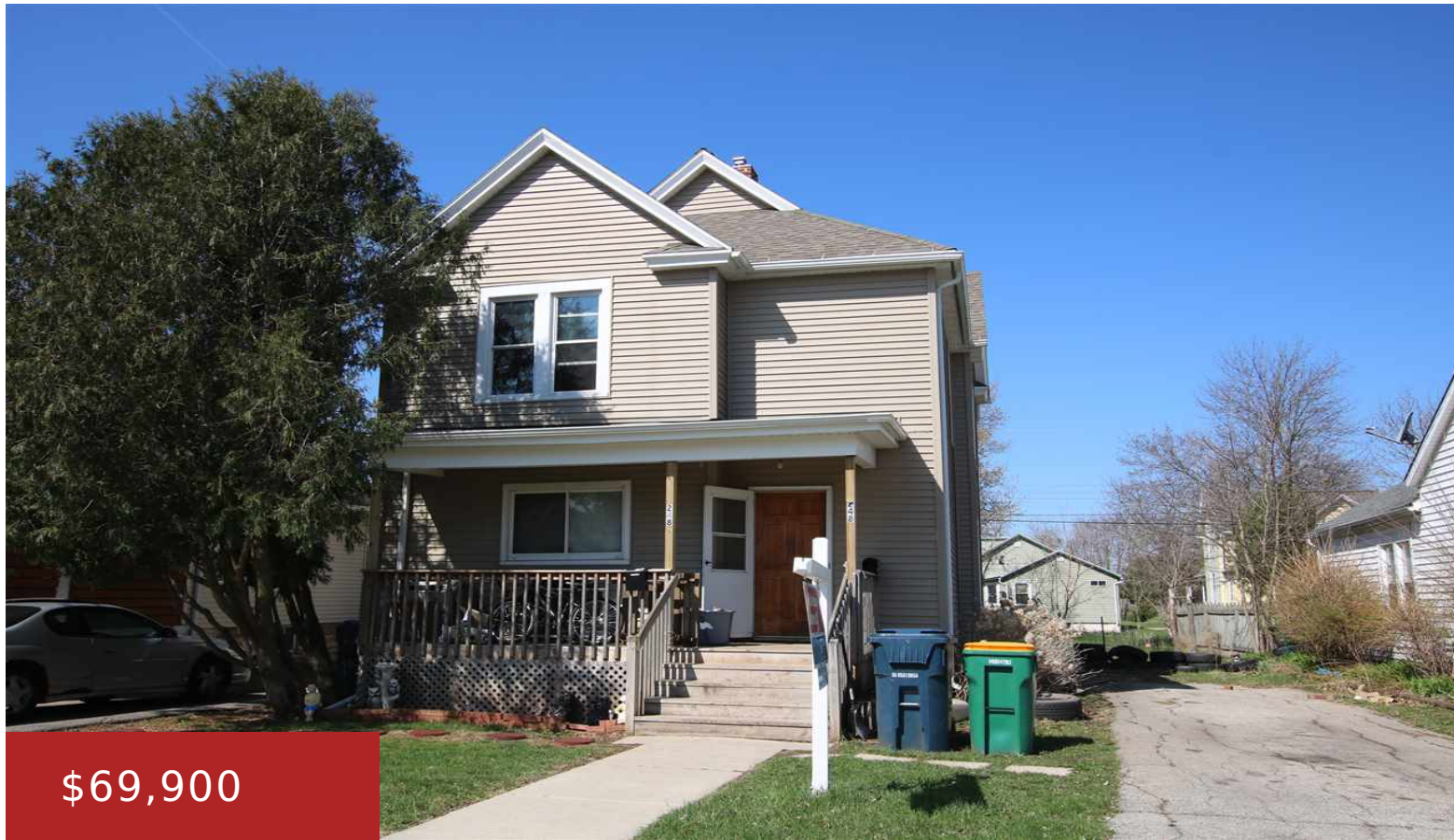


248 ELM STREET, FOND DU LAC, WI, 54935-4921

https://www.adashunjones.com

248 ELM Street,  
FOND DU LAC, WI,  
54935-4921



INVESTMENT OPPORTUNITY! Spacious 2BR Upper/2BR Lower Duplex. Newer siding & roof. Low maintenance. Both units occupied. Call TODAY!

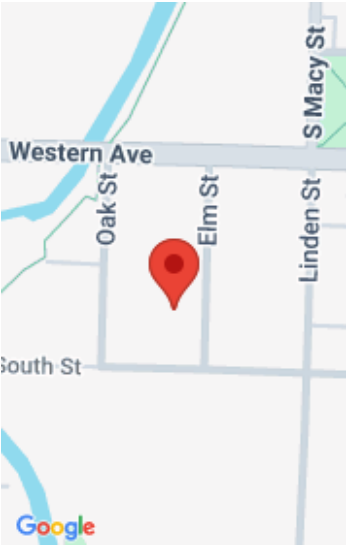


**Listing**  
Adashun Jones, Inc.



**Tim**  
Adashun Jones, Inc.

- Residential Income
- Duplex,Residential
- Closed
- 1922 sq ft



---

## Features

**GarageYN:** No

**FireplaceYN:** No

**Above Grade Finished Area, sq ft:**  
1922

**Inclusions:** Stove, Refrigerator each  
unit

**AttachedGarageYN:** No

**PoolPrivateYN:** No

**Tax Amount:** 2371

**Exclusions:** Tenant's/Seller's Personal Property -  
Washer/Dryer are Tenants

---

## Amenities

**Waterfront available:** No

**Sewer:** Public Sewer

**Water Source:** Public

---

## Building Details

**NewConstructionYN:** No

**Exterior material:** Vinyl Siding

**Heating:** Forced Air

**Parking:** Outside