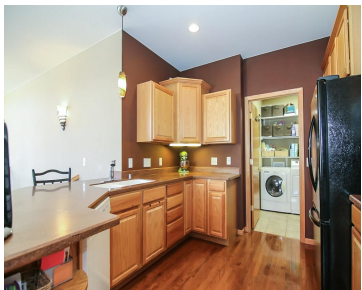




\$269,900

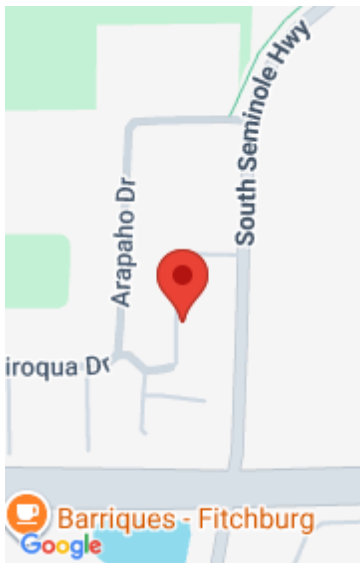


Superior location near Capital City Bike Trail, Arboretum and shopping. Prairie style ranch offers a sunny, open floor plan w/ soaring 11ft ceilings, 1st floor laundry (washer & dryer included), some custom fixtures & upper balcony. Master bdrm/bath has walk-in closet, dual vanity & jetted tub. Kitchen features Corian counters w/ breakfast bar, abundant cabinetry...

- 3 beds
- 3 baths
- Condominium,Res
- Sold
- 2092 sq ft



Amber Huemmer
RE/MAX Preferred



Features

GarageYN: Yes

AttachedGarageYN: Yes

FireplaceYN: Yes

PoolPrivateYN: No

Utilities: Cable Available

Features: Accessible Bedroom, Accessible Full Bath, Breakfast Bar, Gas, Main Level, Soaking Tub, Vaulted Ceiling(s), Walk-in Closet(s)

Above Grade Finished Area, sq ft: 1343 **Below Grade Finished Area, sq ft:** 749

Tax Year: 2013

Tax Amount: 5205

Inclusions: All window coverings

Amenities

Waterfront available: No

Cooling:
Central Air

Amenities:

Dishwasher, Disposal, Dryer, Microwave, Range, Refrigerator, Washer, Water Softener Owned

Water Source:
Public

Sewer: Public Sewer

Building Details

NewConstructionYN: No

Heating: Forced Air, Natural Gas

Basement: Daylight, Finished, Full, Sump Pump, Walk-Out Access

Exterior material: Brick, Fiber Cement, Stone

Parking: Attached, Garage, Garage Door Opener

Agent Details

Agent Full Name: Amber Huemmer

Agent Email: Amber@thhtrealty.com