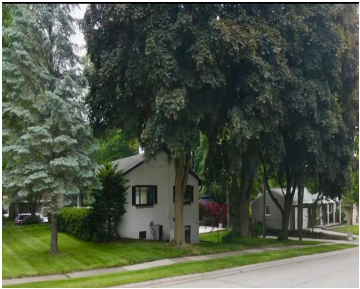


2360 HILLSIDE LANE, GREEN BAY, WI, 54302

https://www.adashunjones.com

2360 HILLSIDE  
Lane, GREEN BAY,  
WI, 54302

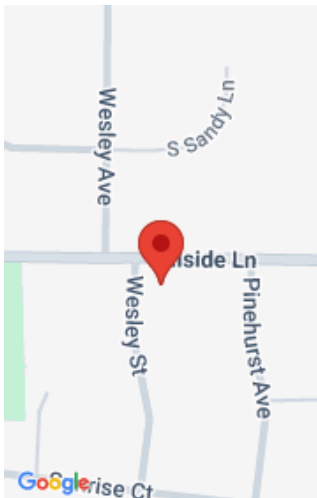


Don't miss out on this sprawling, all-brick walk-out ranch on located in the Preble Park area with over 2600 sq ft. (per Assessor)! Updates galore with granite countertops, LVF & carpets, new patio doors, new concrete patio w/hot tub & gazebo, new concrete driveway, freshly painted exterior/interior, updated bathrooms & much more! 200-amp service w/whole...



**Nicky**  
Coldwell Banker Real Estate Group

- 4 beds
- 3 baths
- Residential
- Residential,Single Family Residence
- Active
- 2629 sq ft



---

# Features

<b>GarageYN:</b> No	<b>AttachedGarageYN:</b> No
<b>FireplaceYN:</b> No	<b>PoolPrivateYN:</b> No
<b>Lot Features:</b> Corner Lot, Near Bus Line	<b>Features:</b> Cable Available,Formal Dining,Hi-Speed Internet Availbl,Kitchen Island,One,Pantry,Walk-in Closet(s),Wood Burning
<b>Above Grade Finished Area, sq ft:</b> 2165	<b>Below Grade Finished Area, sq ft:</b> 464
<b>Tax Amount:</b> 5354	

---

# Amenities

<b>Waterfront available:</b> No	<b>Cooling:</b> Central Air
<b>Amenities:</b> Dishwasher,Disposal,Dryer,Microwave,Range,Refrigerator,Washer	<b>Water Source:</b> Public
<b>Sewer:</b> Public Sewer	

---

# Room Sizes

Room type	Dimensions	Level
Bedroom 1	12x17	Main
Bedroom 2	12x17	Main
Bedroom 3	14x14	Main
Bedroom 4	12x13	Main
Family Room	15x25	Lower
Formal Dining Room	11x11	Main
Kitchen	11x13	Main
Living Room	16x19	Main
Dining Room	8x13	Main

## Building Details

**NewConstructionYN:** No

**ArchitecturalStyle:** Ranch

**Heating:** Radiant, Zoned

**Basement:** Finished,Full,Full Sz Windows Min 20x24,Sump Pump,Walk-Out Access

**Exterior material:** Brick

**Parking:** Attached,Basement,Built Under Home,Garage Door Opener

## Agent Details

**Agent Full Name:** Nicky A Melotte

**Agent Email:** nmelotte@coldwellhomes.com