

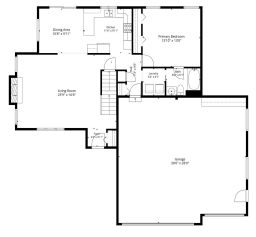
2316 MADDY COURT, GREEN BAY, WI, 54303-5373

<https://www.adashunjones.com>

2316 MADDY Court,
GREEN BAY, WI,
54303-5373



\$419,900



TOTAL 2520 sq. ft.
Basement 851 sq. ft. 1st Floor 1353 sq. ft. 2nd Floor 534 sq. ft.
INCLUDES GARAGE 2520 sq. ft. TOTAL 2520 sq. ft. INCLUDES 19 sq. ft.
CARE TO BECOME 2520 sq. ft. INCLUDE 2520 sq. ft.



• 2520 sq ft

This pre-inspected home in the sought after Howard-Suamico school district is the one you don't want to miss! You'll love the great room with 2-story ceiling, huge loft, giant rec room, massive garage, spacious bedrooms, large deck with lush lawn, all appliances included and more! Some photos are digitally staged. Lower level square footage and...



Christine
Coldwell Banker Real Estate Group



Features

Price per sq ft: \$166.63

Lot Size, acres: 0.28

For Sale or Rent: For Sale

Parcel Number: VH-1794

AttachedGarageYN: No

FireplaceYN: No

Features: At Least 1 Bathtub, Cable Available, Hi-Speed Internet Availbl, One, Split Bedroom, Vaulted Ceiling(s), Walk-in Closet(s), Wood Burning

Above Grade Finished Area, sq ft: 1720

Water Source: Public

Tax Amount: \$3,918

Area, sq ft: 2,520 sq ft

Year built: 2000

Garage Spaces: 3

GarageYN: No

Cooling: Central Air

PoolPrivateYN: No

Amenities: Dishwasher, Disposal, Dryer, Electric Dryer, Electric Oven, Electric Range, Freezer, Microwave, Range, Refrigerator, Washer

Below Grade Finished Area, sq ft: 800

Sewer: Public Sewer

Room Sizes

Main Level Bedroom 1 14x13 Kitchen 11x10 Living Room 24x16 Dining Room 12x11 Upper Level Bedroom 2 14x11 Bedroom 3 12x10 Other Room 15x10 Lower Level Family Room 39x27

Building Details

NewConstructionYN: No

Basement: Finished,Full,Radon Mitigation System,Stubbed for Bath

Exterior Material: Vinyl Siding **Parking:** Attached, Garage Door Opener

Agent Details

Agent Full Name: Christine M. Degen

Agent Email: cdegen@coldwellhomes.com