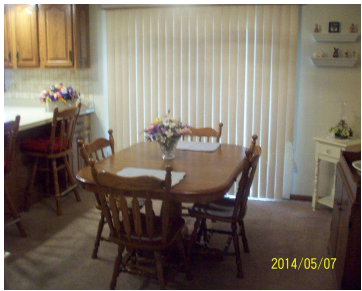


2210 PONTIAC DRIVE, JANESVILLE, WI, 53545

https://www.adashunjones.com

2210 Pontiac Drive,
Janesville, WI,
53545

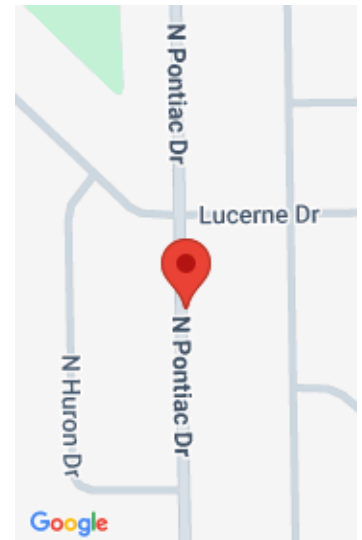


Sparkling clean home inside and out !! This home features a finished lower level with 1/2 bath, bar area, rec room and a sitting room. Kitchen features a large pantry, newer roof and central air. Low heat costs. Lots of perennials in back yard, shed, and fence on 2 sides. Close to shopping, mall, I-90,...

- 3 beds
- 1 bath
- R
- Sold
- 1188 sq ft



Shelly Tomlinson
Century 21 Affiliated



Features

GarageYN: Yes

FireplaceYN: No

Utilities: Cable Available

AttachedGarageYN: Yes

PoolPrivateYN: No

Features: Accessible Bedroom, Accessible Full Bath, Breakfast Bar, Cable Available, Electric, Lower Level, Pantry, Water softener inc

Above Grade Finished Area, sq ft: 1188

Below Grade Finished Area, sq ft: 527

Tax Year: 2013

Tax Amount: 2568

Inclusions: All window coverings

Amenities

Waterfront available: No

Cooling:
Central Air

Amenities: Dishwasher, Disposal, Microwave, Range, Refrigerator, Water Softener Owned

Water Source:
Public

Sewer: Public Sewer

Building Details

NewConstructionYN: No

Heating: Forced Air, Natural Gas

Basement: Finished, Full

Exterior material: Brick, Stone, Vinyl Siding

Parking: Attached, Garage Door Opener, Paved

Agent Details

Agent Full Name: Shelly Tomlinson

Agent Email: srt509@yahoo.com