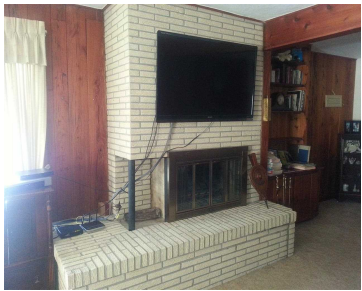
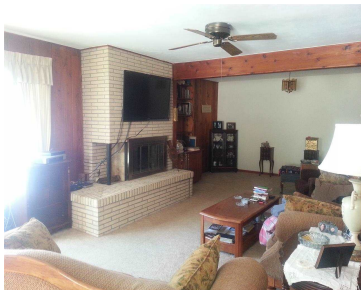


2202 HAWTHORNE PARK DRIVE, JANESVILLE, WI,
53545

<https://www.adashunjones.com>

2202 Hawthorne
Park Drive,
Janesville, WI,
53545

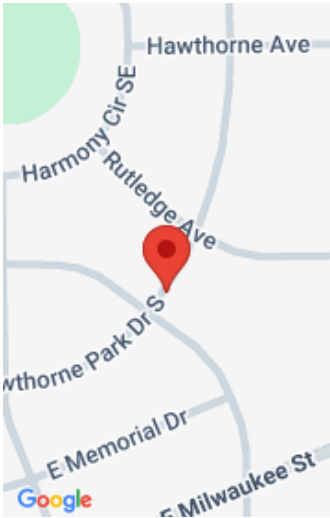


Great established Eastside location just around the corner from schools and shopping. Well maintained ranch style home with lots of space for the whole family. Lovely refinished hardwood floors, two fireplaces, and huge recreation room with wet bar. Vacation in your own backyard with heated inground pool with newer liner. This home is a must...

- 3 beds
- 2 baths
- R1
- Sold
- 2282 sq ft



Ronda Richter Weber
Century 21 Affiliated



Features

GarageYN: Yes

AttachedGarageYN: Yes

FireplaceYN: No

PoolPrivateYN: Yes

PoolFeatures: In Ground

Features: Dryer,Lower Level,Pantry,Washer,Water softener inc,Wet Bar,Wood Burning

Above Grade Finished Area, sq ft: 1482

Below Grade Finished Area, sq ft: 800

Tax Year: 2014

Tax Amount: 2056

Inclusions: All window coverings

Amenities

Waterfront available: No

Amenities: Dishwasher,Dryer,Range,Refrigerator,Washer,Water Softener Owned

Water Source: Public

Sewer: Public Sewer

Building Details

NewConstructionYN: No

Heating: Forced Air, Radiant, Natural Gas

Basement: Finished,Full

Exterior material: Brick,Stone,Wood Siding

Parking: Attached,Paved

Agent Details

Agent Full Name: Ronda Richter Weber

Agent Email: ronda@c21affiliated.com