

2201 PORTAGE ROAD, MADISON, WI, 53704

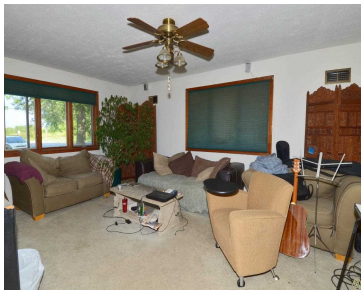
https://www.adashunjones.com

2201 PORTAGE
Road, Madison, WI,
53704



\$149,800

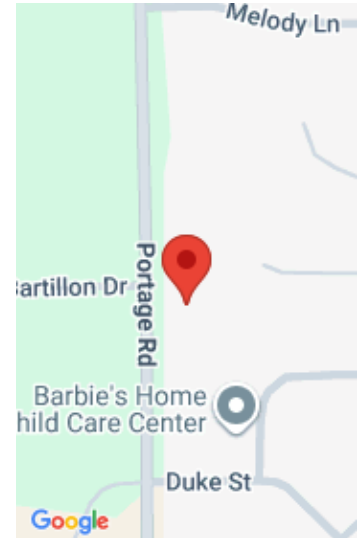
Just listed well priced 3 bedroom ranch hardwood, tile and some carpeted floors. Popular Sandburg school area, walk to parks easy access to East Town, downtown, airport and interstate! Huger quiet back yard with deck for that BBQ and oversized 24x36 3 car garage. UHP Elite Home Warranty. Priced under assessment! Tenant occupied. Call for...



- 3 beds
- 1 bath
- SR-C1
- Sold
- 1360 sq ft



David Freiberg
Stark Company, REALTORS



Features

GarageYN: Yes

FireplaceYN: Yes

Lot Features: Near Public Transit

Features: Accessible Bedroom, Accessible Full Bath, Cable Available, Dryer, Lower Level, Washer, Water softener inc, Wood Burning

Tax Year: 2013

Inclusions: Some Window Coverings

AttachedGarageYN: No

PoolPrivateYN: No

Utilities: Cable Available

Above Grade Finished Area, sq ft: 1360

Tax Amount: 3820

Amenities

Waterfront available: No

Amenities: Dishwasher, Disposal, Dryer, Range, Refrigerator, Washer, Water Softener Owned

Sewer: Public Sewer

Cooling:
Central Air

Water Source: Public

Building Details

NewConstructionYN: No

Basement: Full, Sump Pump

Parking: Additional Parking, Detached, Paved, Tandem

Heating: Forced Air, Natural Gas

Exterior material: Vinyl Siding

Agent Details

Agent Full Name: David Freiberg

Agent Email: dfreiber@starkhomes.com