

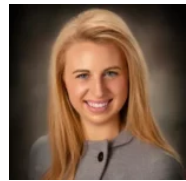
217 COTTAGE AVENUE, FOND DU LAC, WI, 54935

https://www.adashunjones.com

217 COTTAGE  
Avenue, FOND DU  
LAC, WI, 54935

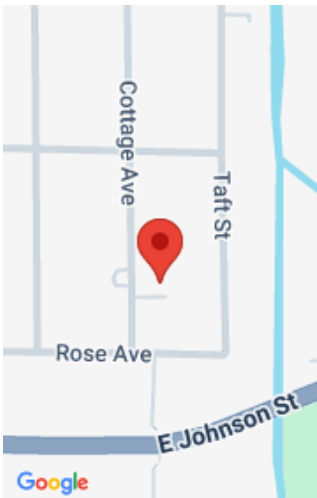


Vintage meets modern in this cozy yet spacious 4 bed, 3 ba, 2600 sq ft Lannon Stone Cape Cod in NE FDL. Fall in love w/ your stunning remodeled farmhouse-style kitchen complete w/ sizable quartz island, solid surface countertops, coffeebar, ample cupboard space, SS appliances, heated floors, & dining area w/ custom built-in bench seats!...



**Bethany**  
Adashun Jones, Inc.

- 4 beds
- 3 baths
- Residential
- Residential,Single Family Residence
- Closed
- 2600 sq ft



---

# Features

<b>GarageYN:</b> No	<b>AttachedGarageYN:</b> No
<b>FireplaceYN:</b> No	<b>PoolPrivateYN:</b> No
<b>Lot Features:</b> Sidewalk	<b>Features:</b> At Least 1 Bathtub,Gas,Kitchen Island,Two,Walk-in Shower,Water Softener-Own,Wood Burning,Wood/Simulated Wood Fl
<b>Above Grade Finished Area, sq ft:</b> 2600	<b>Tax Amount:</b> 4711.3
<b>Inclusions:</b> Ask for a list of Inclusions	<b>Exclusions:</b> Ask for a list of Exclusions

---

# Amenities

<b>Waterfront available:</b> No	<b>Cooling:</b> Central Air
<b>Amenities:</b> Dishwasher,Disposal,Dryer,Range,Refrigerator,Washer	<b>Water Source:</b> Public
<b>Sewer:</b> Public Sewer	

---

# Room Sizes

Room type	Dimensions	Level
Bedroom 1	13x13	Main
Bedroom 2	11x14	Main
Bedroom 3	11x13	Upper
Bedroom 4	11x13	Upper
Family Room	18x19	Main
Kitchen	14x21	Main
Living Room	12x20	Main
Unfinished	13x33	Lower
Other Room	8x12	Main

## Building Details

**NewConstructionYN:** No

**ArchitecturalStyle:** Cape Cod

**Heating:** Forced Air, Radiant

**Basement:** Full,Partial Fin. Non-contig,Sump Pump

**Exterior material:** Stone

**Parking:** Detached,Garage Door Opener

## Agent Details

**Agent Full Name:** Bethany J Warntjes

**Agent Email:** bethany@adashunjones.com