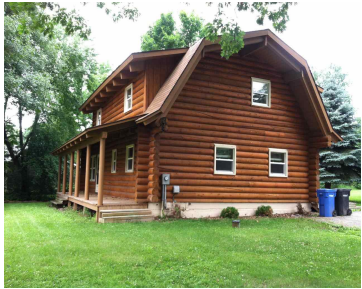


2095 YAHARA DRIVE, PLEASANT SPRINGS, WI, 53589

https://www.adashunjones.com

2095 Yahara Drive,
Pleasant Springs,
WI, 53589



\$169,900

Previous buyers' land contract went south on this updated full log construction home with an open floor plan on large wooded lot. Updates include kitchen, bathrooms, finished lower level with 3/4 bath and bonus lower level office. Expansive veranda. Master Suite with walk in closet. Upstairs: 3 bedrooms with Master bath with whirlpool tub and...

- 4 beds
- 2 baths
- A-1 EX
- Sold
- 2600 sq ft



Matthew Costello
Keller Williams Realty



Features

GarageYN: No

FireplaceYN: No

Lot Features: Corner Lot, Wooded, Subdivided

Above Grade Finished Area, sq ft: 2058

Tax Year: 2013

Inclusions: Humidifier, All window coverings

AttachedGarageYN: No

PoolPrivateYN: No

Features: Accessible Bedroom, Accessible Full Bath, Jetted bathtub, Kitchen Island, Lower Level, Vaulted Ceiling(s), Walk-in Closet(s), Water softener inc

Below Grade Finished Area, sq ft: 542

Tax Amount: 3027

Amenities

Waterfront available: Deeded access-No frontage, Lake, River Front

Water Source: Well

Amenities: Dishwasher, Water Softener Owned

Sewer: Private Sewer

Building Details

NewConstructionYN: No

Basement: Finished, Full

Parking: No Garage, Paved

Heating: Radiant, Electric

Exterior material: Log, Wood Siding

Agent Details

Agent Full Name: Matthew Costello

Agent Email: mcostellowi@gmail.com