

2038 STEPHANIE COURT, BLACK EARTH, WI, 53515

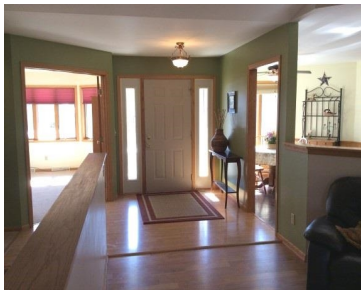
https://www.adashunjones.com

2038 Stephanie Court, Black Earth, WI, 53515



\$234,900

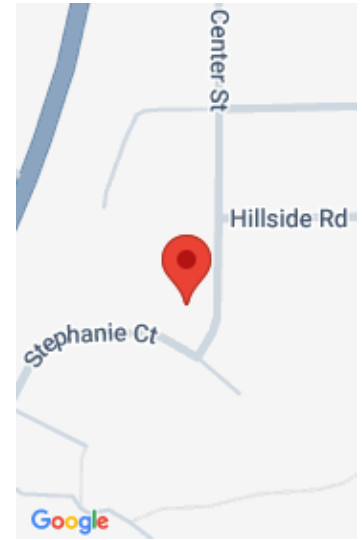
REDUCED \$5,000! Spacious home with an abundance of natural light. Nice location on a corner lot. Large fenced yard nicely landscaped with perennials, rose garden and fruit trees. Open floor plan offers a great flow. Huge kitchen with tile floors, stainless appliances, desk and breakfast nook. Main floor laundry room off the kitchen. Formal dining...



- 3 beds
- 3 baths
- Res
- Sold
- 2865 sq ft



Diane Patterson
First Weber Inc



Features

GarageYN: Yes

FireplaceYN: Yes

Lot Features: Corner Lot

Features: Cable Available,Dryer,Jetted bathtub,Kitchen Island,Main Level,Pantry,Vaulted Ceiling(s),Walk-in Closet(s),Washer,Water softener inc,Wood Burning

Below Grade Finished Area, sq ft: 955

Tax Amount: 4251

AttachedGarageYN: Yes

PoolPrivateYN: No

Utilities: Cable Available

Above Grade Finished Area, sq ft: 1910

Tax Year: 2014

Inclusions: Humidifier,Water Purifier,All window coverings

Amenities

Waterfront available: No

Amenities: Dishwasher,Disposal,Dryer,Range,Refrigerator,Washer,Water Softener Owned

Sewer: Public Sewer

Cooling:
Central Air

Water Source: Public

Building Details

NewConstructionYN: No

Heating: Forced Air, Natural Gas

Basement: Finished,Full,Full Size Windows/Exposed,Sump Pump

Exterior material: Vinyl Siding

Parking: Attached,Garage Door Opener,Heated Garage,Paved

Agent Details

Agent Full Name: Diane Patterson

Agent Email: pattersond@firstweber.com