

2010 SHAFER DRIVE, FITCHBURG, WI, 53711

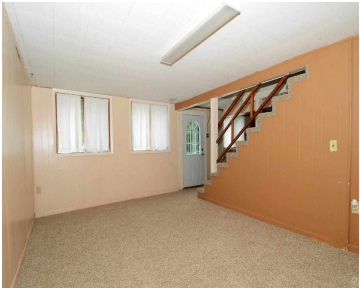
https://www.adashunjones.com

2010 Shafer Drive,
Fitchburg, WI,
53711



\$165,000

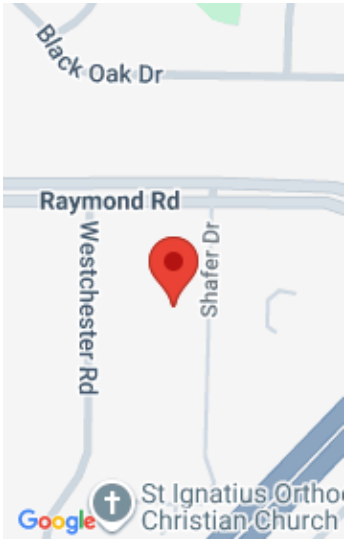
Freshly painted and new carpet for this 4 bdrm, 2 bath ranch with large kitchen built-ins throughout, and a huge yard ready for you! Wood floors, ample counterspace and walk out lower level. Grill out on your deck and enjoy the large private yard. Attached garage with plenty of space for a workshop. Conveniently located...



- 4 beds
- 2 baths
- Res
- Sold
- 1890 sq ft



Scott Ellingboe
Stark Company, REALTORS



Features

GarageYN: Yes

FireplaceYN: No

Utilities: Cable Available

Above Grade Finished Area, sq ft: 1466

Tax Year: 2013

Inclusions: Some Window Coverings

AttachedGarageYN: Yes

PoolPrivateYN: No

Features: Cable Available,Dryer,Lower Level,Pantry,Washer,Water softener inc

Below Grade Finished Area, sq ft: 424

Tax Amount: 3923

Amenities

Waterfront available: No

Water Body Name: N/A

Cooling: Central Air

Amenities: Dishwasher,Disposal,Dryer,Range,Refrigerator,Washer,Water Softener Owned

Water Source: Public

Sewer: Public Sewer

Building Details

NewConstructionYN: No

Heating: Forced Air, Natural Gas

Basement: Full,Partially Finished,Walk-Out Access **Exterior material:** Vinyl Siding

Parking: Attached,Garage Door Opener,Paved

Agent Details

Agent Full Name: Scott Ellingboe

Agent Email: Scott@SellingMadison.com