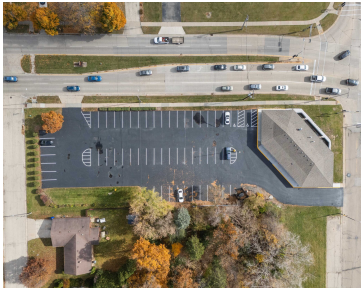


2009 MEMORIAL DRIVE, APPLETON, WI, 54915-1222

https://www.adashunjones.com

2009 MEMORIAL  
Drive, APPLETON,  
WI, 54915-1222

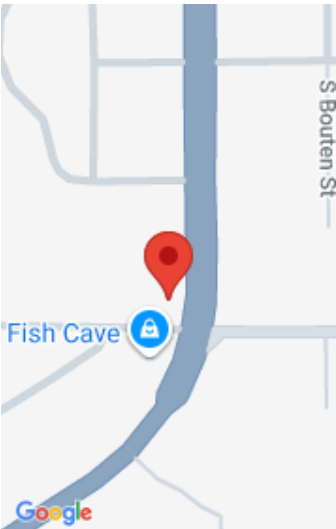


FOR LEASE - Fully remodeled office space in a high-visibility Appleton location with easy access to Highway 441. Offering 1,800 SF on the main level and 4,994 SF in the lower level. Gross lease at \$16/SF annually includes utilities, fiber internet, Wi-Fi, and access to shared spaces such as conference room, lobby, and restrooms. The...

- Commercial Sale
- COMMERCIAL,Property For Lease
- Active
- 9988 sq ft



**Ryan**  
Century 21 Ace Realty



---

## Features

**GarageYN:** No

**FireplaceYN:** No

**Features:** Elevator,Offices,Sprinkler Wet

**AttachedGarageYN:** No

**PoolPrivateYN:** No

**Tax Amount:** 6206

---

## Amenities

**Waterfront available:** No

**Water Source:** Public

**Cooling:** Central Air

**Sewer:** Public Sewer

---

## Building Details

**NewConstructionYN:** No

**Heating:** Forced Air, Varies by Unit, Zoned

**Exterior material:** Brick

**ParkingTotal:** 49

**Basement:** Full

**Parking:** On Site,Paved

---

## Agent Details

**Agent Full Name:** Ryan Hawkins

**Agent Email:** ryan.hawkins@c21ace.com