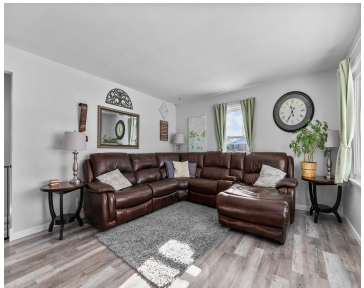
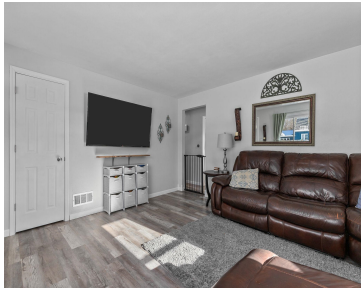


1936 WALDEN AVENUE, APPLETON, WI, 54915-4228

https://www.adashunjones.com

1936 WALDEN
Avenue, Appleton,
WI, 54915-4228



This well-maintained 3-bedroom, 2-bath home in South Appleton offers charm and modern updates throughout! The main level features two bedrooms, a beautifully updated kitchen, and a dining room with patio doors leading to a deck and patio overlooking the fenced backyard. The spacious upper-level bedroom includes ample storage, while the lower level boasts a cozy...

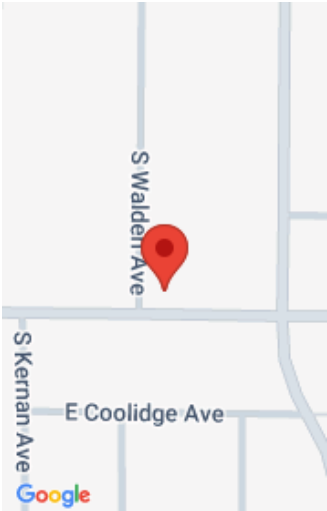
- 3 beds
- 2 baths
- Residential
- Residential
- Closed
- 1740 sq ft



Maureen
Keller Williams Fox Cities



Skylar
Keller Williams Fox Cities



Features

GarageYN: No

FireplaceYN: No

ExteriorFeatures: Deck, Fenced Yard, Patio

Features: At Least 1 Bathtub, Formal Dining, None, Walk-in Shower, Wood/Simulated Wood Fl

Tax Amount: 2842.21

Exclusions: Seller's Personal Property

AttachedGarageYN: No

PoolPrivateYN: No

Lot Features: Corner Lot, Sidewalk

Above Grade Finished Area, sq ft: 1740

Inclusions: Stove, Refrigerator, Dishwasher, Microwave

Amenities

Waterfront available: No

Water Source: Municipal/City

Amenities: Dishwasher, Microwave, Range/Oven, Refrigerator

Sewer: Municipal Sewer

Room Sizes

Room type	Dimensions	Level
Bedroom 1	10x15	Main
Bedroom 2	10x11	Main
Bedroom 3	17x14	Upper
Formal Dining Room	15x16	Main
Kitchen	16x9	Main
Living Or Great Room	16x14	Main
Unfinished	14x26	Lower
Unfinished 2	15x16	Lower
Other Room	10x9	Main

Building Details

NewConstructionYN: No

Basement: Full,Partial Fin. Non-contig,Partial Finished Pre2020,Sump Pump

Parking: Detached

Heating: Central A/C, Forced Air

Exterior material: Aluminum/Steel,Deck,Fenced Yard,Patio

Agent Details

Agent Full Name: Skylar W Liebzeit

Agent Email: skylar@wifarmandhomerealty.com