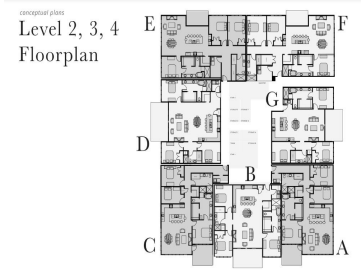
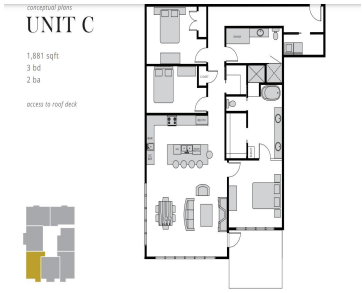


1931 HOLMGREN WAY, GREEN BAY, WI, 54304

https://www.adashunjones.com

1931 HOLMGREN  
Way, GREEN BAY,  
WI, 54304

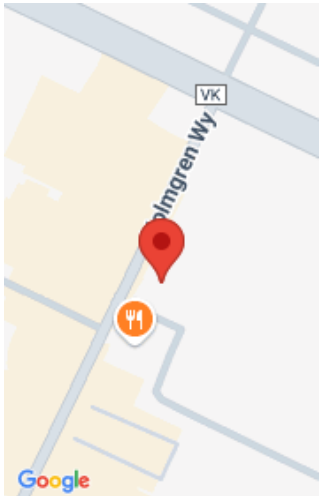


Experience luxury living in this stunning condo residence in pro football’s most historic team neighborhood! Boasting floor to ceiling windows, you’ll enjoy panoramic views of the Stadium District every day. The spacious master suites offer the ultimate in comfort and relaxation w/walk in closet, bath and sauna. The chef inspired kitchen is perfect for entertaining...



**Robin**  
Realty Executives Fortitude

- 3 beds
- 2 baths
- Residential
- Condo,Condominium
- Active
- 1881 sq ft



---

# Features

<b>GarageYN:</b> No	<b>AttachedGarageYN:</b> No
<b>FireplaceYN:</b> No	<b>PoolPrivateYN:</b> No
<b>ExteriorFeatures:</b> Balcony	<b>Features:</b> Gas,Kitchen Island,One,Pantry
<b>Above Grade Finished Area, sq ft:</b> 1881	<b>Inclusions:</b> Fridge, stove, microwave, dishwasher, washer, dryer
<b>Exclusions:</b> Sellers personal property	

---

# Amenities

<b>Waterfront available:</b> No	<b>Cooling:</b> Central Air
<b>Amenities:</b> Dishwasher,Dryer,Microwave,Range,Refrigerator,Washer	<b>Water Source:</b> Public
<b>Sewer:</b> Public Sewer	

---

# Room Sizes

Room type	Dimensions	Level
Bedroom 1	14x14	Main
Bedroom 2	12x16	Main
Bedroom 3	16x10	Main
Kitchen	20x10	Main
Living Room	12x19	Main
Dining Room	19x9	Main

## Building Details

<b>NewConstructionYN:</b> No	<b>Heating:</b> Forced Air
<b>Exterior material:</b> Aluminum Siding,Balcony,Shake Siding,Stone	<b>Parking:</b> Assigned,Electric Vehicle Charging Station(s),Heated Garage,Underground

## Agent Details

<b>Agent Full Name:</b> Robin Baade	<b>Agent Email:</b> rb@plusonerealtygroup.com
-------------------------------------	---