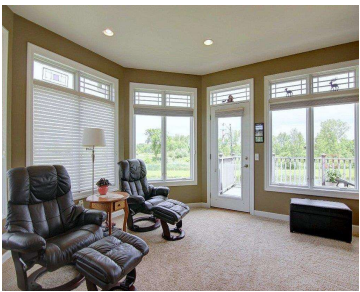
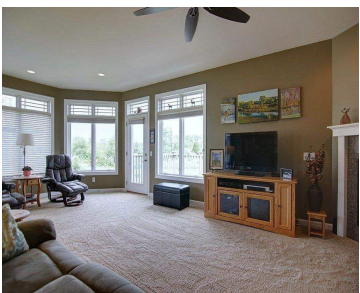


1900 MEADOW DRIVE, WI, 53589

<https://www.adashunjones.com>

1900 MEADOW  
Drive, WI, 53589



Eastwood Condominiums offers an extraordinary view of thriving wetlands & ponds that are full of wildlife. Exceptional living for the discriminating buyer can be found here with a location that can't be beat. Over 2,800 S.F. finished with features such as 9' ceilings, wood and tile floors, owner's suite with separate shower & jetted tub,...

- 3 beds
- 3 baths
- Condominium,Res
- Sold
- 2836 sq ft



**Tom Matson**  
Berkshire Hathaway HomeServices Matson Real Estate



---

## Features

**GarageYN:** Yes

**FireplaceYN:** Yes

**Utilities:** Cable Available

**AttachedGarageYN:** Yes

**PoolPrivateYN:** No

**Features:** Accessible Bedroom, Accessible Full Bath, Breakfast Bar, Gas, Kitchen Island, Main Level, Soaking Tub, Walk-in Closet(s)

**Above Grade Finished Area, sq ft:** 1672 **Below Grade Finished Area, sq ft:** 1164

**Tax Year:** 2013

**Tax Amount:** 5723

**Inclusions:** All window coverings

---

## Amenities

**Waterfront available:** Pond

**Cooling:** Central Air

**Amenities:** Dishwasher, Disposal, Microwave, Range, Refrigerator **Water Source:** Public

**Sewer:** Public Sewer

---

## Building Details

**NewConstructionYN:** No

**Heating:** Forced Air, Natural Gas

**Basement:** Daylight, Full, Partially Finished, Sump Pump, Walk-Out Access

**Exterior material:** Brick, Stone, Vinyl Siding

**Parking:** Attached, Garage, Garage Door Opener

---

## Agent Details

**Agent Full Name:** Tom Matson

**Agent Email:** tmatson@matsonhomes.com