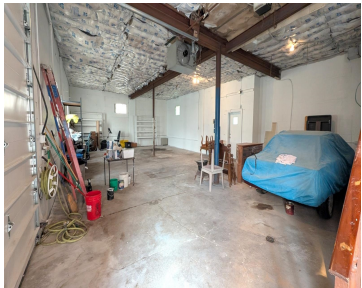


1635 HASKEL STREET, APPLETON, WI, 54914

https://www.adashunjones.com

1635 HASKEL
Street, APPLETON,
WI, 54914



\$249,900

AWESOME LOCATION! START YOUR NEW BUSINESS HERE or relocate or expand! Former lawncare building w/extra space for vehicles that has a fenced around it. Ideal location with quick access to downtown & I-41. Large, almost .5 acre, lot. Building was built in 1956 and has over 2213 SF w/over 600 SF of office space. Heated...

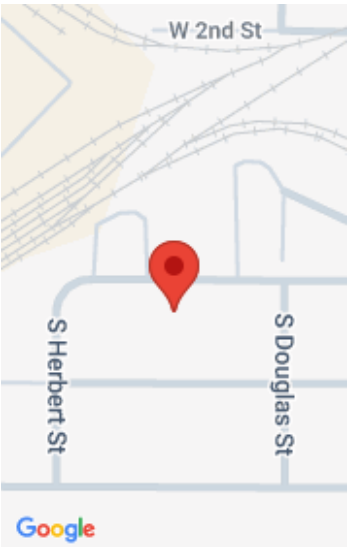
- Commercial Sale
- COMMERCIAL,Real Estate
- Active
- 2213 sq ft



Keith
Coldwell Banker Real Estate Group



Brandon
Coldwell Banker Real Estate Group



Features

GarageYN: No

FireplaceYN: No

Features: Offices

Inclusions: nothing

AttachedGarageYN: No

PoolPrivateYN: No

Tax Amount: 1611.09

Exclusions: nothing

Amenities

Waterfront available: No

Sewer: Public Sewer

Water Source: Public

Building Details

NewConstructionYN: No

Exterior material: Block

Heating: Forced Air

Parking: Off Site,On Site,On Street,Paved

Agent Details

Agent Full Name: Keith Krepline

Agent Email: kkrepline@coldwellhomes.com