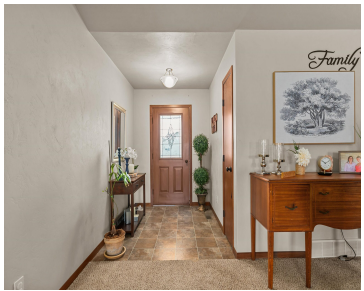


1572 MEADOW FLOWER COURT, MENASHA, WI,  
54956-5495

https://www.adashunjones.com

1572 MEADOW  
FLOWER Court,  
Menasha, WI,  
54956-5495

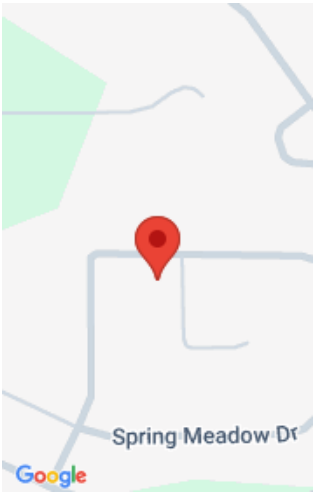


Welcome to this meticulously maintained 3-BR, 2-BA ranch with a 2-car attached garage, located in a sought-after neighborhood that's perfect for peaceful living. Beautiful entrance leading to a spacious great room with vaulted ceilings, perfect for entertaining or relaxing. The eat-in kitchen is a chef's delight, featuring an abundance of maple cabinetry, a convenient pantry,...

- 3 beds
- 2 baths
- Residential
- Residential
- Closed
- 1370 sq ft



**Stephanie**  
Century 21 Affiliated



---

# Features

<b>GarageYN:</b> No	<b>AttachedGarageYN:</b> No
<b>FireplaceYN:</b> No	<b>PoolPrivateYN:</b> No
<b>ExteriorFeatures:</b> Patio	<b>Features:</b> At Least 1 Bathtub,None,Pantry,Vaulted Ceiling,Walk-in Closet(s),Walk-in Shower
<b>Above Grade Finished Area, sq ft:</b> 1370	<b>Tax Amount:</b> 4056
<b>Inclusions:</b> Stove, Refrigerator, Microwave, Dishwasher, Washer & Dryer	<b>Exclusions:</b> Sellers Personal Property

---

# Amenities

<b>Waterfront available:</b> No	<b>Amenities:</b> Dishwasher,Dryer,Microwave,Range/Oven,Refrigerator,Washer
<b>Water Source:</b> Municipal/City	<b>Sewer:</b> Municipal Sewer

---

# Room Sizes

Room type	Dimensions	Level
Bedroom 1	14x12	Main
Bedroom 2	11x11	Main
Bedroom 3	11x10	Main
Kitchen	12x09	Main
Living Or Great Room	14x21	Main
Dining Room	09x09	Main
Other Room	06x05	Main

## Building Details

**NewConstructionYN:** No

**ArchitecturalStyle:** Ranch

**Heating:** Central A/C, Forced Air

**Basement:** 8Ft+ Ceiling,Full,Stubbed for Bath,Sump Pump

**Exterior material:** Patio,Vinyl

**Parking:** Attached,Opener Included

## Agent Details

**Agent Full Name:** Stephanie M Svanda

**Agent Email:** stephanie.svanda@c21affiliated.com