

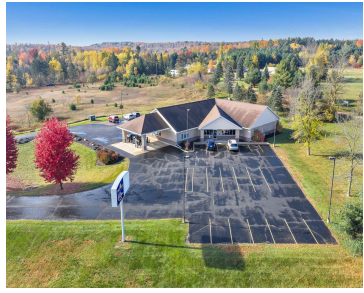
# 14353 STATE HIGHWAY 32/64, MOUNTAIN, WI, 54149

<https://www.adashunjones.com>

14353 STATE  
HIGHWAY 32/64,  
MOUNTAIN, WI,  
54149



**\$3,347 /  
month**

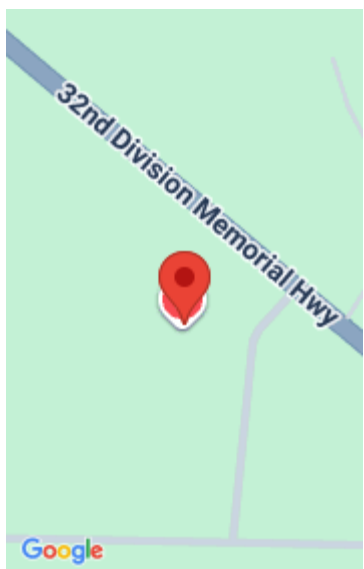


Prime commercial lease opportunity along State Hwy 32/64 in the Town of Mountain. Built in 2006, this free-standing 6,944 sq. ft. building offers approx. 2,510 sq. ft. of flexible space ideal for office, retail, or service-based use. Features include highway visibility, ample parking, and municipal water and sewer on a 10.46-acre lot. Annual rent \$16...

• 6944 sq ft



**Jesse**  
ICONIQ Realty, LLC



---

## Features

**Lease Amount, per sq ft:** \$16

**Area, sq ft:** 6,944 sq ft

**Year built:** 2006

**Parcel Number:** 029030302331A1

**AttachedGarageYN:** No

**Cooling:** Central Air

**PoolPrivateYN:** No

**Sewer:** Public Sewer

**Leasable Area, sq ft:** 2,510

**Lot Size, acres:** 10.46

**For Sale or Rent:** For Sale

**GarageYN:** No

**Heating:** Forced Air

**FireplaceYN:** No

**Water Source:** Public

**Tax Amount:** \$10,200

---

## Building Details

**NewConstructionYN:** No

**Basement:** None

**Exterior Material:** Aluminum Siding, Vinyl Siding

---

## Agent Details

**Agent Full Name:** Jesse J. Saliger

**Agent Email:** jesse@iconiqrealty.com