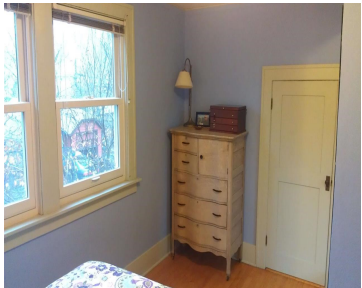
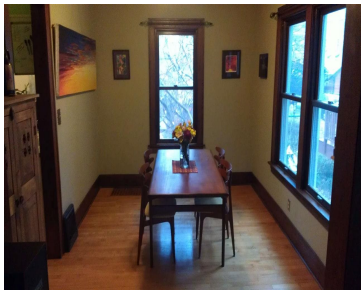


1423 RUTLEDGE STREET, MADISON, WI, 53703

https://www.adashunjones.com

1423 RUTLEDGE
Street, Madison, WI,
53703

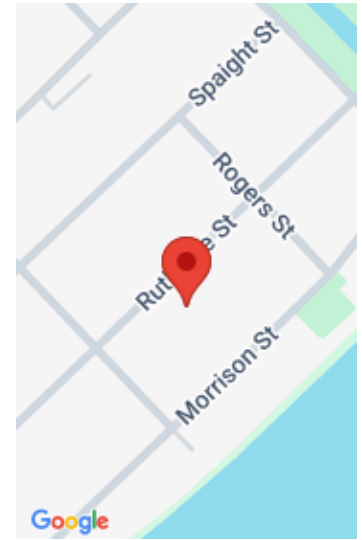


Voted one of best neighborhoods in U.S., new roof, new furnace, on-demand water heater, fully landscaped yard, hard wood throughout, basement bonus room/guest space, large front porch, one block from river and lake. Absolutely ready to live in. Lush perennial gardens, veggie garden space, fruit trees and flowering shrubs throughout spring and summer.

- 2 beds
- 2 baths
- TR-C4
- Sold
- 1700 sq ft



Jerry Wheeler
J. Wheeler Group, LLC



Features

GarageYN: No

FireplaceYN: No

Lot Features: Near Public Transit

Features: Accessible Doors, Accessible Hallway(s), Cable Available, Gas, Lower Level, Pantry, Walk-in Closet(s), Water softener inc

Below Grade Finished Area, sq ft: 400

Tax Amount: 6836

AttachedGarageYN: No

PoolPrivateYN: No

Utilities: Cable Available

Above Grade Finished Area, sq ft: 1300

Tax Year: 2013

Inclusions: Water Purifier, Some Window Coverings

Amenities

Waterfront available: No

Amenities: ENERGY STAR Qualified Appliances, Range, Refrigerator, Water Softener Owned

Sewer: Public Sewer

Cooling: Central Air

Water Source: Public

Building Details

NewConstructionYN: No

Basement: Finished, Full

Parking: Garage Door Opener, Paved, Unpaved

Heating: Forced Air, Radiant, Natural Gas

Exterior material: Wood Siding

Agent Details

Agent Full Name: Jerry Wheeler

Agent Email: jwheeler@jwheelergroup.com