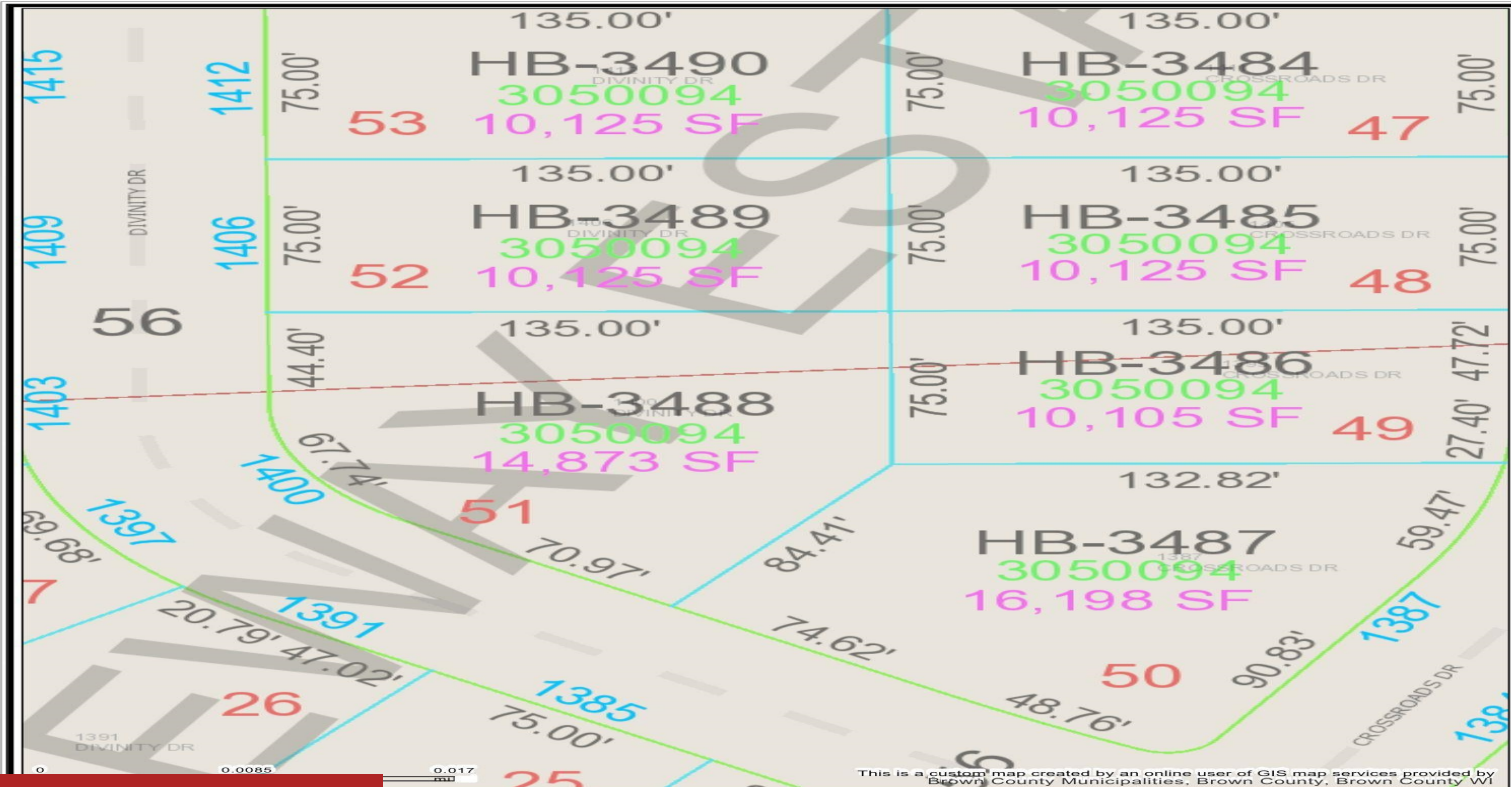


1411 CROSSROADS DRIVE, DE PERE, WI, 54115

https://www.adashunjones.com

1411 CROSSROADS  
Drive, DE PERE, WI,  
54115



\$68,900

This is a custom map created by an online user of GIS map services provided by Brown County Municipalities, Brown County, Wisconsin.

**Parcel ownership key**

- Parcel Boundary
- Condominium
- Gap or Overlap
- "hooks" indicate parcel ownership crosses a line
- Right of Way line
- Meander line
- Lines between deeds or lots
- Historic Parcel Line
- Vacated Right of Way

A complete key (legend) is available at: [tinyurl.com/BrownDogLegend](http://tinyurl.com/BrownDogLegend)

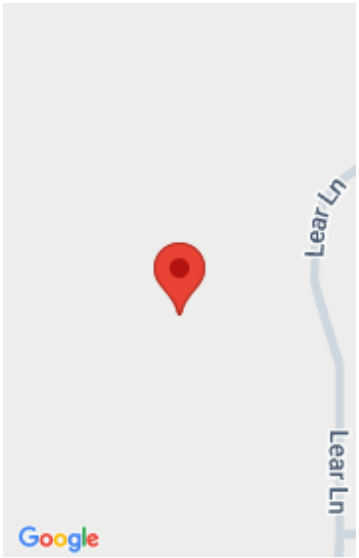
  
(920) 448-6480  
[www.browncountylwi.gov](http://www.browncountylwi.gov)

Located in Gateway Estates...A brand new 58 lot residential subdivision in Hobart in the W. De Pere school district. Restrictive covenants apply. All homes must be started within 4 months from the time of closing. Not builder exclusive. Lot 47.

- Land
- Residential,Vacant Land/Acreage
- Closed



**Michelle**  
Coldwell Banker Real Estate Group



---

## Features

**GarageYN:** No      **AttachedGarageYN:** No

**FireplaceYN:** No      **PoolPrivateYN:** No

**Lot Features:** Level      **Utilities:** Cable Available, Electricity Available, Gas, Telephone Line

**Tax Amount:** 244

---

## Amenities

**Waterfront available:** No

**Water Source:** Municipal/City

**Sewer:** Municipal Sewer

---

## Building Details

**NewConstructionYN:** No

---

## Agent Details

**Agent Full Name:** Michelle Stimpson

**Agent Email:** mstimpson@coldwellhomes.com