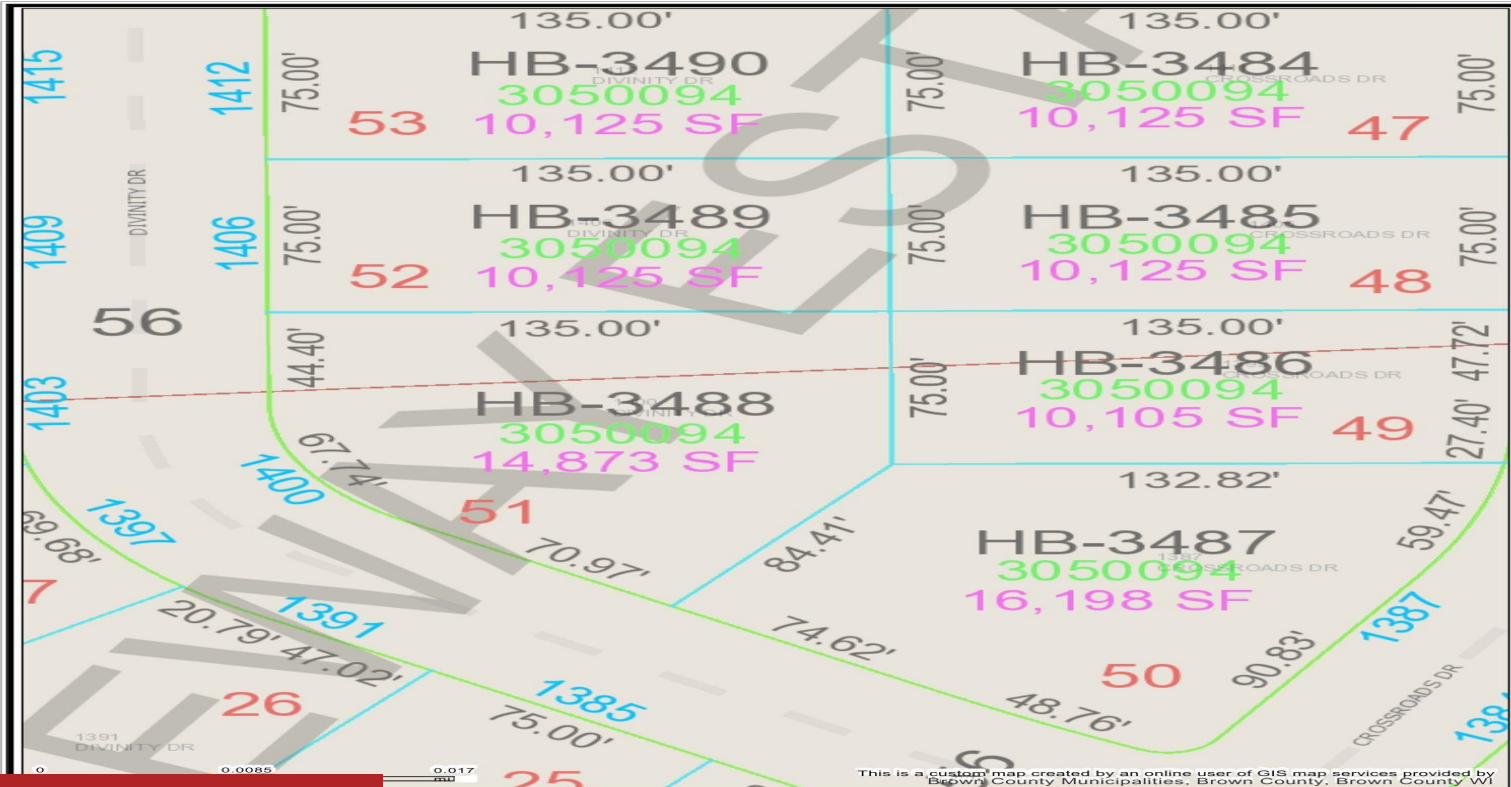


1406 DIVINITY DRIVE, DE PERE, WI, 54115

https://www.adashunjones.com

1406 DIVINITY
Drive, DE PERE, WI,
54115



\$69,900

This is a custom map created by an online user of GIS map services provided by Brown County Municipalities, Brown County, WI

Parcel ownership key

- Parcel Boundary
- Condominium
- Gap or Overlap
- "hooks" indicate parcel ownership crosses a line
- Meander line
- Lines between deeds or lots
- Historic Parcel Line
- Vacated Right of Way

A complete key (legend) is available at: tinyurl.com/BrownDogLegend

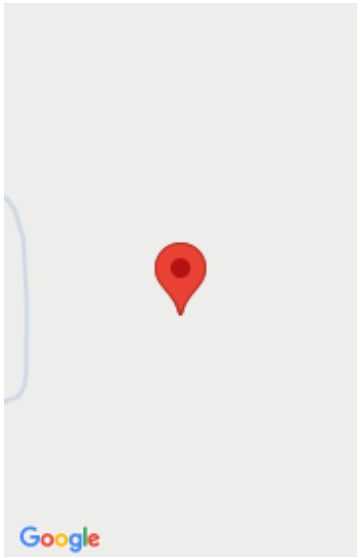

(920) 448-6480
www.browncountywi.gov

Located in Gateway Estates...A brand new 58 lot residential subdivision in Hobart in the W. De Pere school district. Restrictive covenants apply. All homes must be started within 4 months from the time of closing. Not builder exclusive. Lot 52

- Land
- Residential,Vacant Land/Acreage
- Active



Michelle
Coldwell Banker Real Estate Group



Features

GarageYN: No **AttachedGarageYN:** No

FireplaceYN: No **PoolPrivateYN:** No

Lot Features: Level **Utilities:** Cable Available, Electricity Available, Gas, Telephone Line

Tax Amount: 244

Amenities

Waterfront available: No

Water Source: Municipal/City

Sewer: Municipal Sewer

Building Details

NewConstructionYN: No

Agent Details

Agent Full Name: Michelle Stimpson

Agent Email: mstimpson@coldwellhomes.com