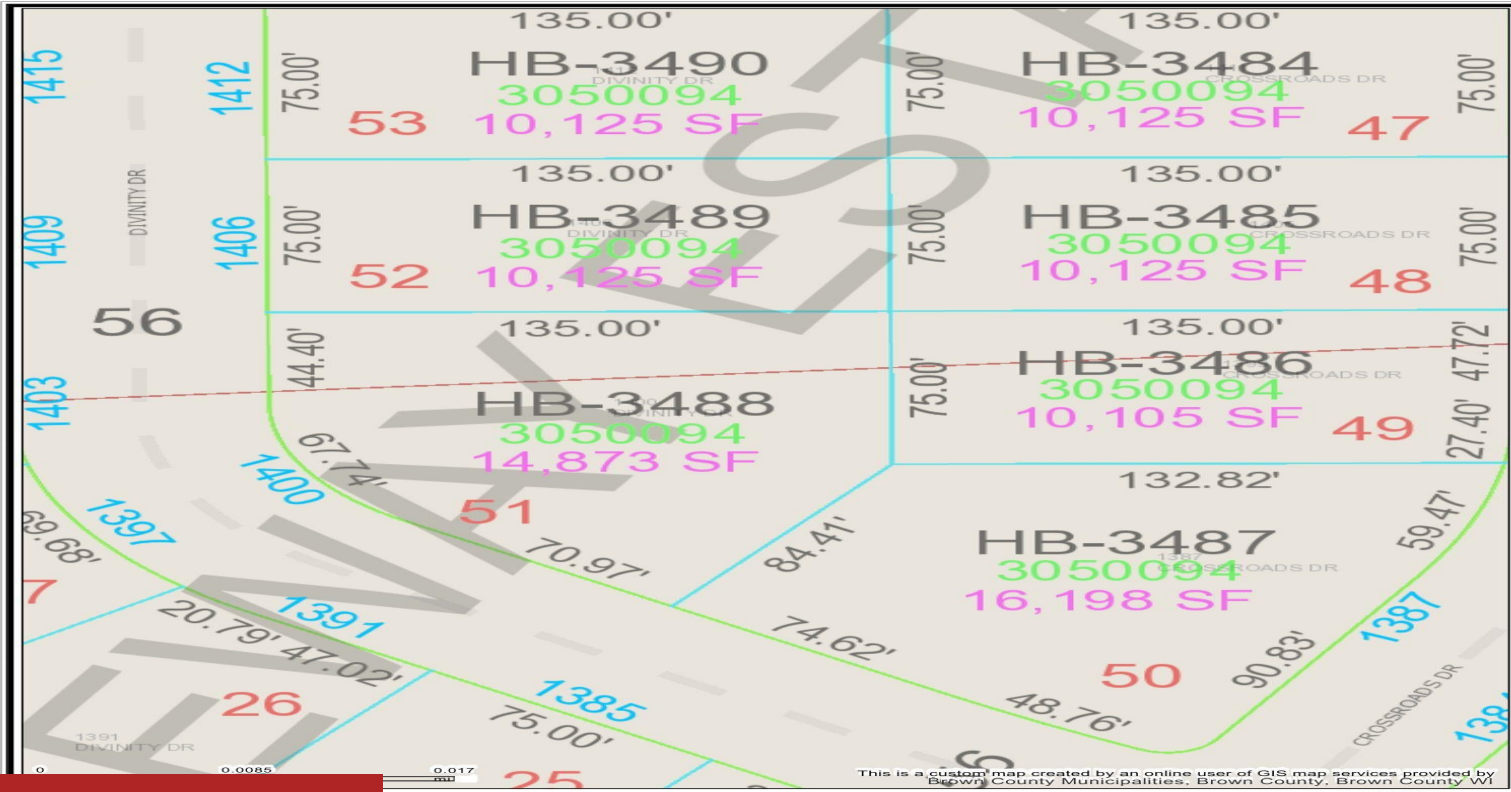


1405 CROSSROADS DRIVE, DE PERE, WI, 54115

https://www.adashunjones.com

1405 CROSSROADS
Drive, DE PERE, WI,
54115



\$68,900

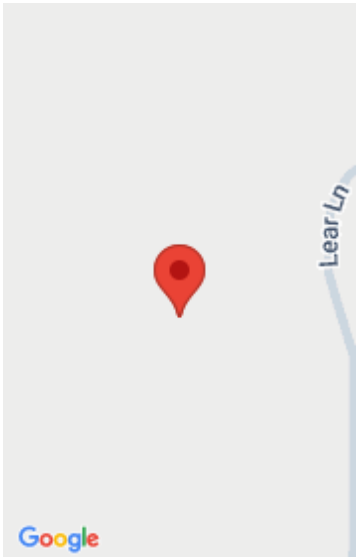
This is a custom map created by an online user of GIS map services provided by Brown County Municipalities, Brown County, Wisconsin. A complete key (legend) is available at: tinyurl.com/BrownDogLegend

Located in Gateway Estates...A brand new 58 lot residential subdivision in Hobart in the W. De Pere school district. Restrictive covenants apply. All homes must be started within 4 months from the time of closing. Not builder exclusive. Lot 48.

- Land
- Residential,Vacant Land/Acreage
- Closed



Michelle
Coldwell Banker Real Estate Group



Features

GarageYN: No **AttachedGarageYN:** No

FireplaceYN: No **PoolPrivateYN:** No

Lot Features: Level **Utilities:** Cable Available, Electricity Available, Gas, Telephone Line

Tax Amount: 244

Amenities

Waterfront available: No

Water Source: Municipal/City

Sewer: Municipal Sewer

Building Details

NewConstructionYN: No

Agent Details

Agent Full Name: Michelle Stimpson

Agent Email: mstimpson@coldwellhomes.com