

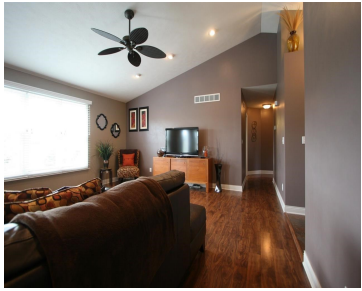
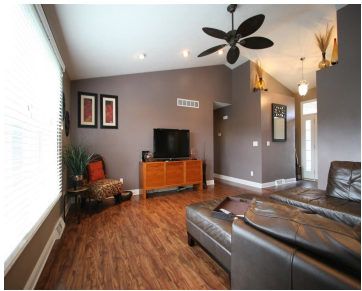
1356 CUMBERLAND DRIVE, EDGERTON, WI, 53534

https://www.adashunjones.com

1356 CUMBERLAND
Drive, Edgerton, WI,
53534



\$209,900

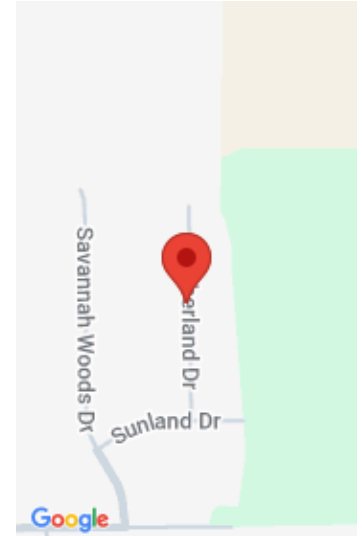


Great location! 15 min to Janesville & 30 min to Capitol. Upgrades galore! Newer ranch w/ open floor plan, vaulted ceilings, quality wd laminate flooring in main living areas and master, porcelain tile in kitchen, dining, entry and baths. Whirlpool SS appliances, maple cabs, spacious breakfast bar & glass tile backsplash in kitchen. Gorgeous bathrooms!...

- 3 beds
- 2 baths
- Res
- Sold
- 1544 sq ft



Noelle Fox
MadisonFlatFeeHomes.com



Features

GarageYN: Yes

FireplaceYN: No

Utilities: Cable Available

AttachedGarageYN: Yes

PoolPrivateYN: No

Features: Accessible Bedroom, Accessible Doors, Accessible Full Bath, Accessible Hallway(s), Breakfast Bar, Cable Available, Main Level, Pantry, Vaulted Ceiling(s), Walk-in Closet(s), Water softener inc

Above Grade Finished Area, sq ft: 1544

Tax Year: 2012

Tax Amount: 4150

Inclusions: All window coverings

Amenities

Waterfront available: No

Cooling: Central Air

Amenities: Dishwasher, Disposal, ENERGY STAR Qualified Appliances, Microwave, Range, Refrigerator, Water Softener Owned

Water Source: Public

Sewer: Public Sewer

Building Details

NewConstructionYN: No

Heating: Forced Air, Natural Gas

Basement: Bath/Stubbed, Full, Full Size Windows/Exposed **Exterior material:** Vinyl Siding

Parking: Attached, Garage Door Opener, Paved

Agent Details

Agent Full Name: Noelle Fox

Agent Email: Noelle@madisonflatfeehomes.com