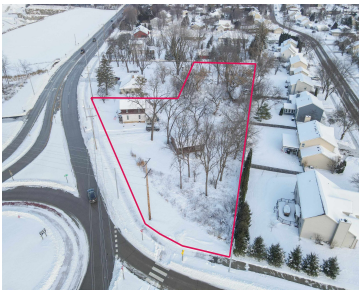
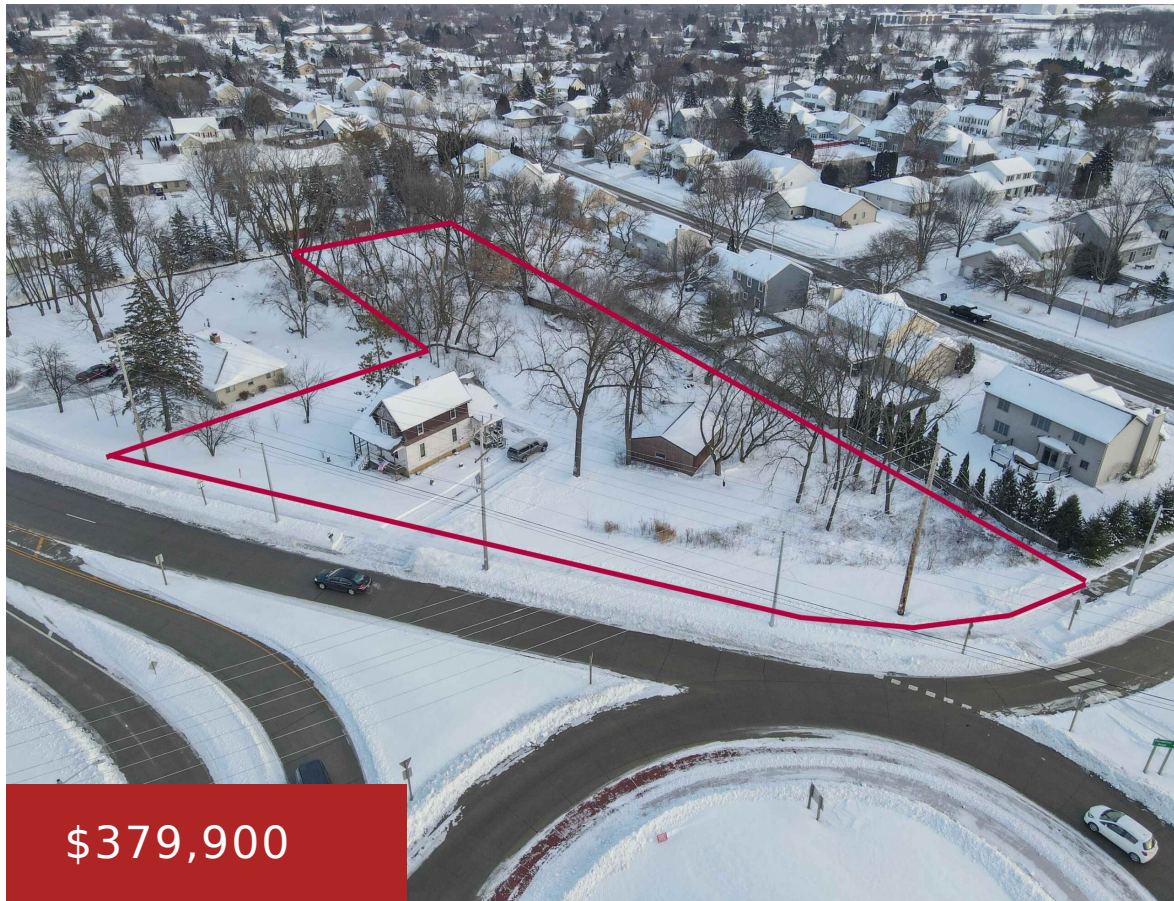


1290 W WINNECONNE AVENUE, NEENAH, WI, 54956

<https://www.adashunjones.com>

1290 W
WINNECONNE
Avenue, NEENAH,
WI, 54956



Rare opportunity to acquire a multi-parcel vacant land for commercial development. 3 contiguous parcels, providing flexibility in site planning, access, and future expansion. Strategically located in a growing commercial corridor, the property offers excellent visibility and convenient access to major roadways, making it well-suited for a variety of commercial uses.

- Land
- Agricultural, Other-See R, Vacant Land/Acreage
- Active



Laurie
Think Hallmark Real Estate



Features

GarageYN: No

FireplaceYN: No

Lot Features: Corner Lot

Tax Amount: 1755.99

AttachedGarageYN: No

PoolPrivateYN: No

Utilities: All Underground

Amenities

Waterfront available: No

Sewer: None

Water Source: Public

Building Details

NewConstructionYN: No

Agent Details

Agent Full Name: Laurie A Smith

Agent Email: laurie@thinkhallmark.com