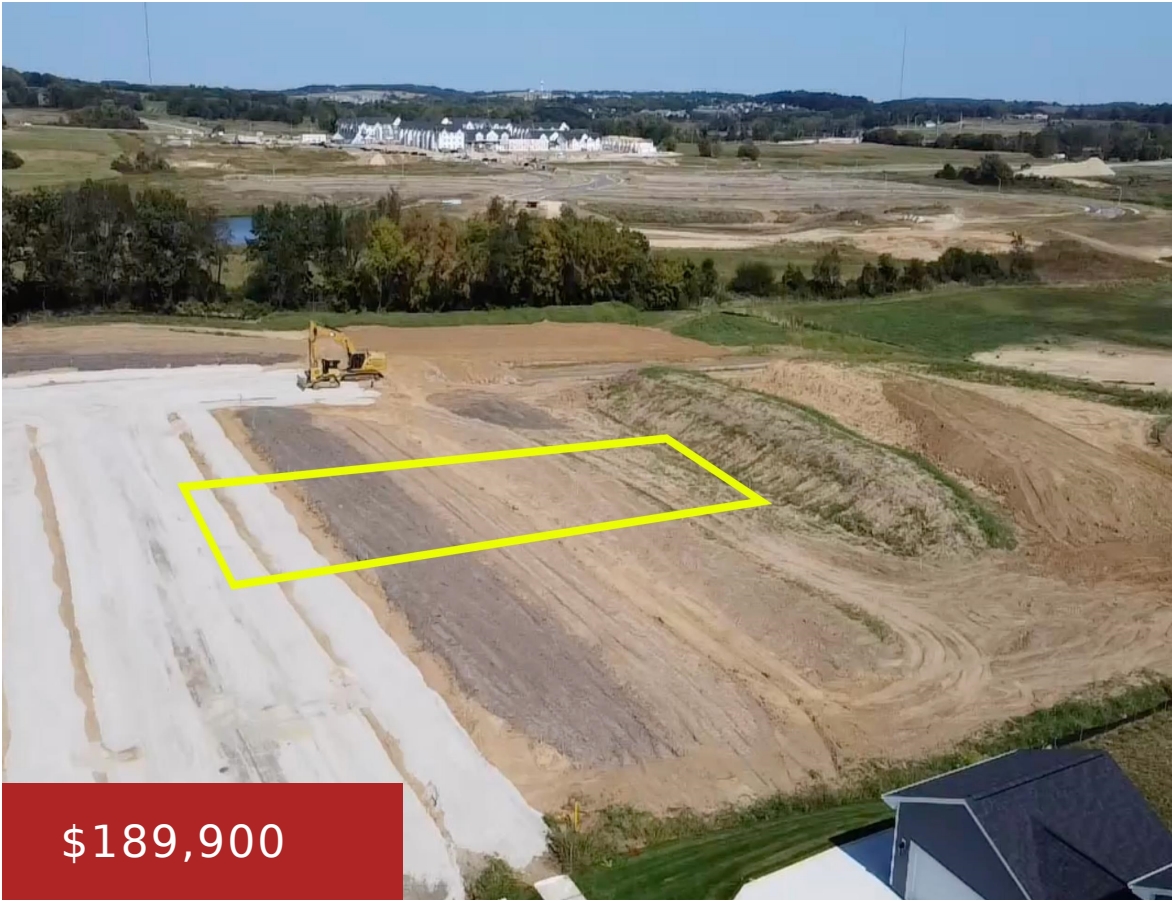


1281 STANLEY WAY, VERONA, WI, 53593
https://www.adashunjones.com

1281 Stanley Way,
Verona, WI, 53593

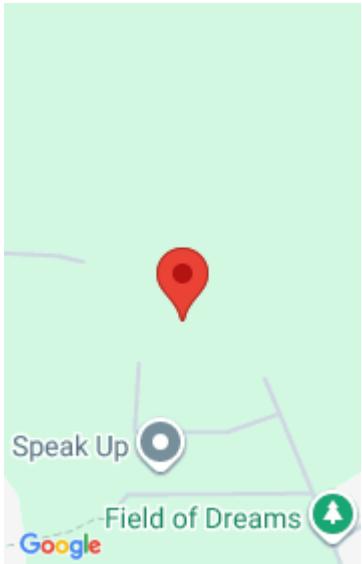


Half rear exposure possible for large windows in lower level. Rear of home faces east. Kettle Creek North is adjacent to Country View Elementary, walking distance to many nearby Verona Schools and just minutes to Hwy 18/151, County Hwy M and main arteries to get you into Madison. Build your own custom home on this...

- Single family
- Active



Kelly Rainiero
Mode Realty Network



Features

GarageYN: No **AttachedGarageYN:** No
FireplaceYN: No **PoolPrivateYN:** No
Utilities: Natural Gas Available, Electricity Available, Phone Available, Cable Available, Underground Utilities **Tax Year:** 2023
Tax Amount: 550

Amenities

Waterfront available: No **Water Source:** Municipal water available
Sewer: Public Sewer

Building Details

NewConstructionYN: No

Agent Details

Agent Full Name: Kelly Rainiero **Agent Email:** kelly@movemode.com