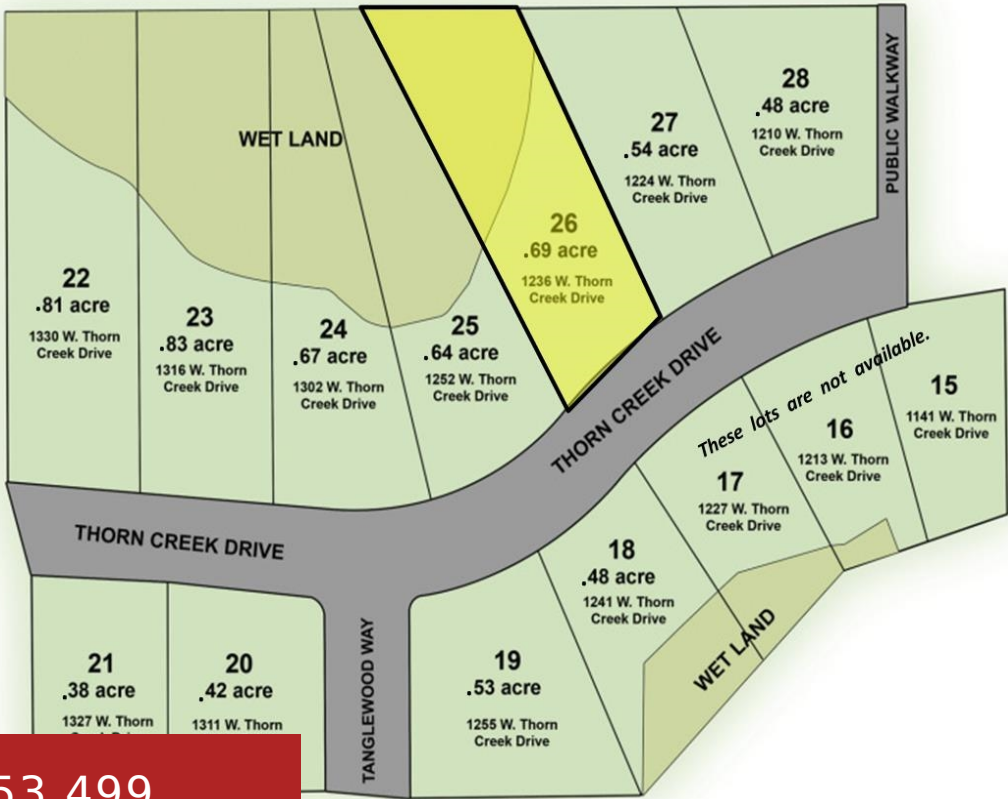


1236 THORN CREEK DRIVE 26, HILBERT, WI, 54129

<https://www.adashunjones.com>

1236 THORN CREEK
Drive 26, Hilbert,
WI, 54129



\$53,499

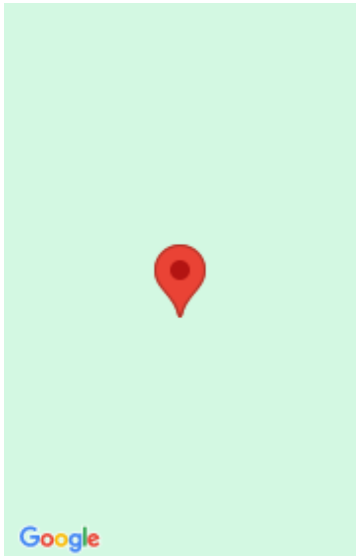


BUILD YOUR NEW HOME on the edge of the village limits of Hilbert! Central location w/short drive to Appleton, Green Bay, Chilton or Manitowoc. Phase 2 is NOW OPEN w/14 lots available with all different sizes too ranging from .38 acre to .83 acre. Beautiful backdrop of woods on some lots w/a walk way to...

- Land
- Residential,Vacant Land/Acreage
- Active



Keith
Coldwell Banker Real Estate Group



Features

GarageYN: No

FireplaceYN: No

Lot Features: Level, Wetlands

AttachedGarageYN: No

PoolPrivateYN: No

Utilities: Cable Available, Electricity Available, Gas

Amenities

Waterfront available: No

Sewer: Municipal Sewer

Water Source: Municipal/City

Building Details

NewConstructionYN: No

Agent Details

Agent Full Name: Keith Krepline

Agent Email: kkrepline@coldwellhomes.com