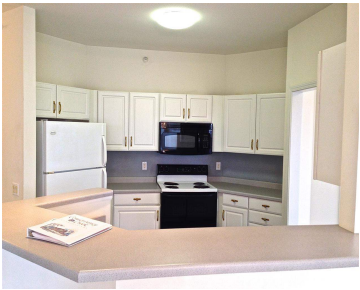
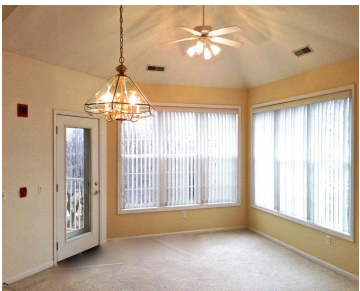


123 SHATO LANE, WI, 53716

<https://www.adashunjones.com>

123 Shato Lane, WI,
53716



\$134,900

Spacious 2BR/2BA top floor ranch style condo overlooking beautiful 60-acre Edna Taylor Conservancy with pond, park & trails! Ceramic tile entryway, LR w/cathedral ceiling & gas fireplace, formal DR flooded in natural light, tiled kit w/b'fast bar, Mstr BR w/tray ceiling, 6 panel doors, private laundry. Enjoy sunrises from your spacious, covered, private balcony! Close...

- 2 beds
- 2 baths
- Condo,Condominium
- Sold
- 1515 sq ft



Jolenta Averill
Lake & City Homes Realty



Features

GarageYN: Yes

FireplaceYN: Yes

Security Features: Security System, Building Security

Utilities: Cable Available

Above Grade Finished Area, sq ft: 1515

Tax Amount: 3554

AttachedGarageYN: Yes

PoolPrivateYN: No

Lot Features: Near Public Transit

Features: Accessible Bedroom, Accessible Doors, Accessible Full Bath, Breakfast Bar, Gas, Main Level, Storage, Vaulted Ceiling(s), Walk-in Closet(s)

Tax Year: 2015

Inclusions: All window coverings

Amenities

Waterfront available: No

Amenities: Dishwasher, Dryer, Microwave, Range, Refrigerator, Washer, Water Softener Owned

Sewer: Public Sewer

Cooling:
Central Air

Water Source:
Public

Building Details

NewConstructionYN: No

Basement: None

Parking: Attached, Garage, Garage Door Opener, Heated Garage, Underground

Heating: Forced Air, Natural Gas

Exterior material: Brick, Stone, Vinyl Siding

Agent Details

Agent Full Name: Jolenta Averill

Agent Email: jolenta@lakeandcityhomes.com