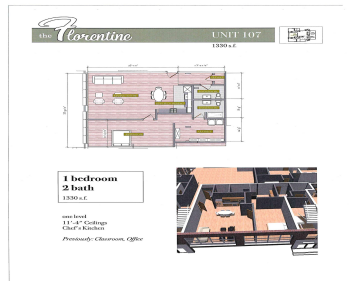


116 SWIFT STREET, WI, 53534

https://www.adashunjones.com

116 Swift Street,
WI, 53534



Welcome to the Florentine! Where historical appeal meets with a modern feel to enhance your lifestyle. The Child School, and Edgerton landmark building is located in the heart of Downtown Edgerton, a short walk to the community center as well as the pool. A blend of garden style and townhome, 2 story style units. Select...

• 1330 sq ft



Mark Gladue
Lauer Realty Group, Inc.



Features

Days on Market: 366

Year built: 2025

Association Name: The Florentine

GarageYN: No

Heating: Forced Air, Natural Gas

FireplaceYN: No

Utilities: Cable Available

Amenities: Dishwasher, Dryer, Range, Refrigerator, Washer

Water Source: Public

Sewer: Public Sewer

Area, sq ft: 1,330 sq ft

Association Fee: 430

Association Amenities: Parking, Hot Water, Water/Sewer, Trash, Snow Removal, Maintenance, Insurance, Maintenance Grounds

AttachedGarageYN: No

Cooling: Central Air

PoolPrivateYN: No

Features: Walk-in Closet(s)

Above Grade Finished Area, sq ft: 1330

Tax Year: 2026

Building Details

NewConstructionYN: No

Exterior Material: Brick, Stone, Wood Siding

Basement: None

Parking: Assigned

Agent Details

Agent Full Name: Mark Gladue

Agent Email: mark@LauerRealtyGroup.com