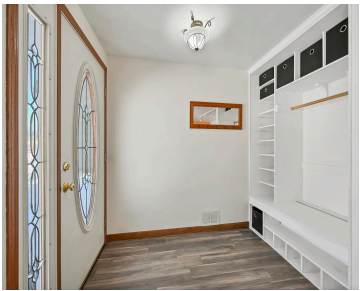


1138 ANCHOR DRIVE, GREEN BAY, WI, 54313

https://www.adashunjones.com

1138 ANCHOR
Drive, GREEN BAY,
WI, 54313

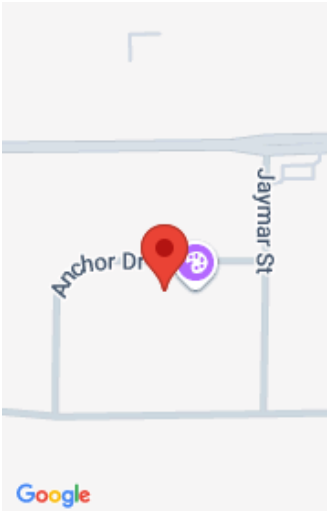


Just blocks from Mountain Bay State Trail, this home offers easy access to biking, dining, and the highway. The main level features a large living room, spacious kitchen, and a cozy second living space with a gas fireplace. Patio doors lead to a brick-paved patio with a fire pit and storage shed. Upstairs, three bedrooms...

- 4 beds
- 3 baths
- Residential
- Residential
- Active
- 2200 sq ft



Ross
NextHome Select Realty



Features

GarageYN: No

FireplaceYN: No

ExteriorFeatures: Deck, Fenced Yard, Storage Shed

Features: Breakfast Bar,Gas,Kitchen Island,Pantry,Skylight(s),Two,Wood Burning

Below Grade Finished Area, sq ft: 572

Inclusions: Refrigerator, Stove, Dishwasher, Washer, Dryer, Basketball Hoop, Basement Bar & Stools, Kitchen Barstools, TV & Mount in Bedroom 4

AttachedGarageYN: No

PoolPrivateYN: No

Lot Features: Rural - Subdivision

Above Grade Finished Area, sq ft: 1628

Tax Amount: 3903.21

Exclusions: Seller's personal property

Amenities

Waterfront available: No

Sewer: Municipal Sewer

Water Source: Municipal/City

Room Sizes

Room type	Dimensions	Level
Bedroom 1	13x11	Upper
Bedroom 2	12x10	Upper
Bedroom 3	12x10	Upper
Bedroom 4	14x11	Lower
Family Room	21x13	Main
Kitchen	21x18	Main
Living Or Great Room	15x13	Main
Other Room	21x13	Lower
Other Room 2	20x18	Lower

Building Details

NewConstructionYN: No

Heating: Central A/C, Radiant, Zoned

Basement: Full,Partial Fin. Non-contig

Exterior material: Brick,Deck,Fenced Yard,Storage Shed,Vinyl

Parking: Attached

Agent Details

Agent Full Name: Ross G Kroll

Agent Email: ross@selectnextrhome.com