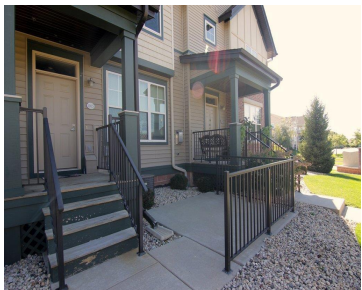
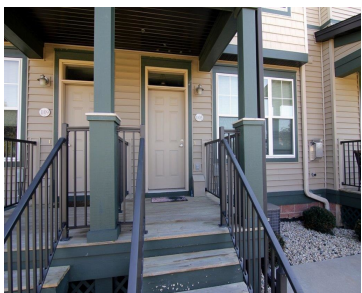


1105 ENTERPRISE DRIVE, WI, 53593
https://www.adashunjones.com

1105 ENTERPRISE
Drive, WI, 53593

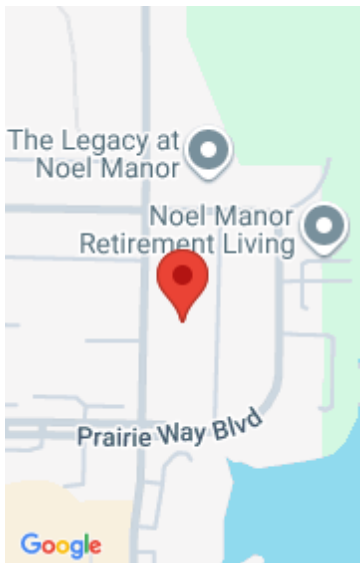


This modern 1 bed, 1.5 bath townhouse condo is just minutes from Epic, Verona Schools & west Madison. Nestled in a quiet neighborhood where you can walk to the Ice Age Trail, shopping, restaurants, public library & nightlife. Condo features 2-sided gas FP, private laundry, (2) underground parking spaces, tile floors & LG master suite...

- 1 bed
- 1 bath
- Condominium,Res
- Sold
- 1079 sq ft



Eric Hansen
Stark Company, REALTORS



Features

GarageYN: No

AttachedGarageYN: No

FireplaceYN: Yes

PoolPrivateYN: No

Utilities: Cable Available

Features: Breakfast Bar,Gas,Pantry,Upper Level,Walk-in Closet(s)

Above Grade Finished Area, sq ft: 1079

Tax Year: 2013

Tax Amount: 2915

Inclusions: All window coverings,Freezer

Amenities

Waterfront available: No

Cooling:
Central Air

Amenities:

Dishwasher,Disposal,Dryer,Microwave,Range,Refrigerator,Washer,Water Softener Owned

Water Source:
Public

Sewer: Public Sewer

Building Details

NewConstructionYN: No

Heating: Forced Air, Natural Gas

Basement: Sump Pump

Exterior material: Brick,Stone,Vinyl Siding

Parking: Assigned,Garage Door Opener,Heated Garage,Underground

Agent Details

Agent Full Name: Eric Hansen

Agent Email: eric@hansenhometeam.com