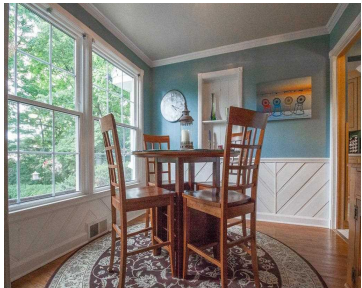
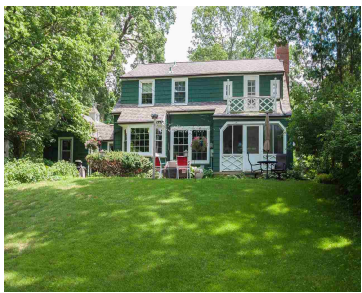


11 PAGET ROAD, MAPLE BLUFF, WI, 53704

https://www.adashunjones.com

11 Paget Road,
Maple Bluff, WI,
53704



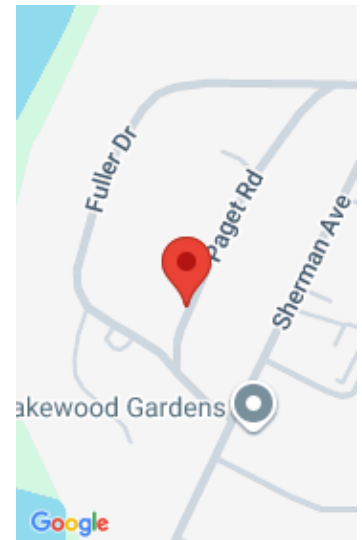
\$385,000

Charm, charm and more charm! You'll love this sweet home in the Fuller's Woods area of Maple Bluff. Set on a large, beautifully landscaped, private lot, large windows throughout make the most of the verdant view. With a surprising amount of space, beautiful hardwood floors, an updated kitchen and lovely architectural details like built-ins and a screened...

- 3 beds
- 2 baths
- R1
- Sold
- 2000 sq ft



Shelly Sprinkman
Sprinkman Real Estate



Features

GarageYN: Yes

FireplaceYN: No

Security Features: Security System

Features: Cable Available, Gas, Lower Level, Security System, Water softener inc

Below Grade Finished Area, sq ft: 400

Tax Amount: 8143

AttachedGarageYN: No

PoolPrivateYN: No

Utilities: Cable Available

Above Grade Finished Area, sq ft: 1600

Tax Year: 2013

Inclusions: All window coverings

Amenities

Waterfront available: No

Cooling:
Central Air

Amenities: Dishwasher, Disposal, Microwave, Range, Refrigerator, Water Softener Owned

Water Source:
Public

Sewer: Public Sewer

Building Details

NewConstructionYN: No

Heating: Forced Air, Natural Gas, Electric

Basement: Full, Partially Finished **Exterior material:** Wood Siding

Parking: Detached, Paved

Agent Details

Agent Full Name: Shelly Sprinkman

Agent Email: shelly@sprinkmanrealestate.com