

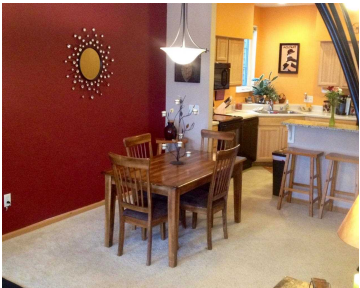
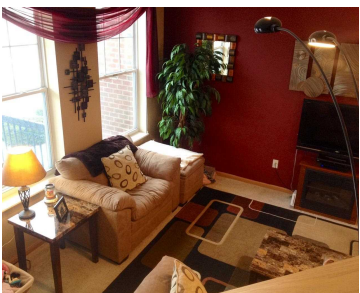
1062 ENTERPRISE DRIVE, WI, 53593

<https://www.adashunjones.com>

1062 Enterprise Drive, WI, 53593



\$174,900

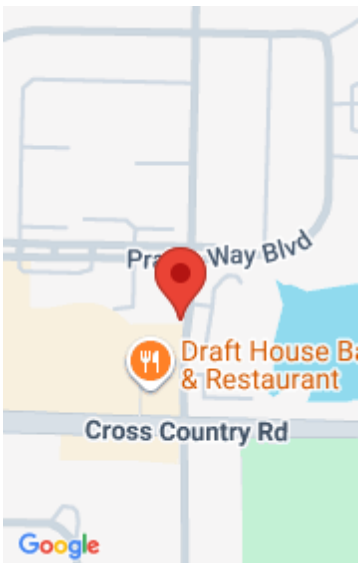


Feel at home in Verona. Well kept 2 BR condo w/ private entry & open floor plan. Walk to dinner or the library, easy access to trails. Spacious two car attached garage. Breakfast bar/eat in kitchen & a formal space for dining. Plus granite counter tops & spacious pantry. Appliances are 4 years old, new...

- 2 beds
- 2 baths
- Condominium,Res
- Sold
- 1430 sq ft



Kathy Bartels
Coldwell Banker Real Estate Group



Features

GarageYN: Yes

FireplaceYN: No

Features: Breakfast Bar,Pantry,Upper Level

Tax Year: 2013

Inclusions: All window coverings

AttachedGarageYN: Yes

PoolPrivateYN: No

Above Grade Finished Area, sq ft: 1340

Tax Amount: 2920

Amenities

Waterfront available: No

Amenities: Dishwasher,Dryer,Microwave,Range,Refrigerator,Washer,Water Softener Owned

Sewer: Public Sewer

Cooling:
Central Air

**Water
Source:**
Public

Building Details

NewConstructionYN: No

Basement: None

Parking: Attached,Garage,Garage Door Opener

Heating: Forced Air, Natural Gas

Exterior material: Brick,Stone,Vinyl Siding

Agent Details

Agent Full Name: Kathy Bartels

Agent Email: kbartels@starkhomes.com