

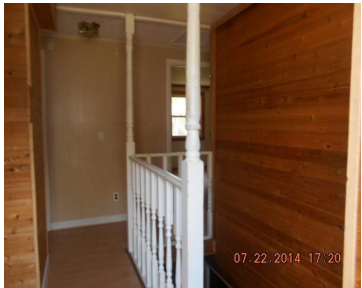
1030 MOUND VIEW DRIVE, PLATTEVILLE, WI, 53818

https://www.adashunjones.com

1030 MOUND VIEW
Drive, Platteville,
WI, 53818



\$94,349

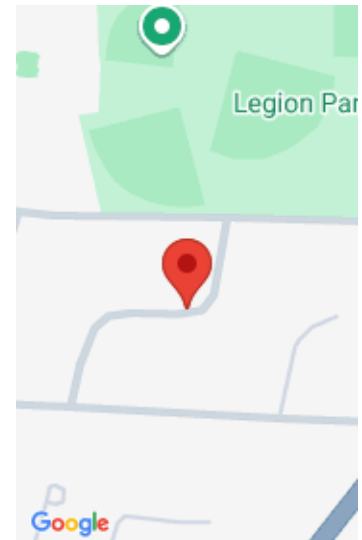


On-line Auction dates 11-06-2014 through 11-13-2014. List price is contractual price. REO Property. Property Sold AS-IS W/O Repair, Warranty or Seller Disclosure. The Listing Broker & Seller assume no responsibility & make no guarantees, warranties or representations as to the availability or accuracy of information contained herein. Tax/Assessment information has not been verified. Buyer or...

- 3 beds
- 2 baths
- Res
- Sold
- 1368 sq ft



Rachel Watson
REALHOME Services and Solutions, Inc.



Features

GarageYN: Yes

FireplaceYN: Yes

Above Grade Finished Area, sq ft: 1368

Tax Amount: 2897

AttachedGarageYN: No

PoolPrivateYN: No

Tax Year: 2013

Amenities

Waterfront available: No

Water Source: Public

Cooling: Central Air

Sewer: Public Sewer

Building Details

NewConstructionYN: No

Basement: Finished,Full

Parking: Detached,Unpaved

Heating: Forced Air, Natural Gas

Exterior material: Vinyl Siding

Agent Details

Agent Full Name: Rachel Watson

Agent Email: rachel.watson@rhss.com