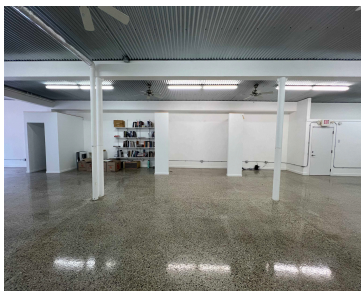
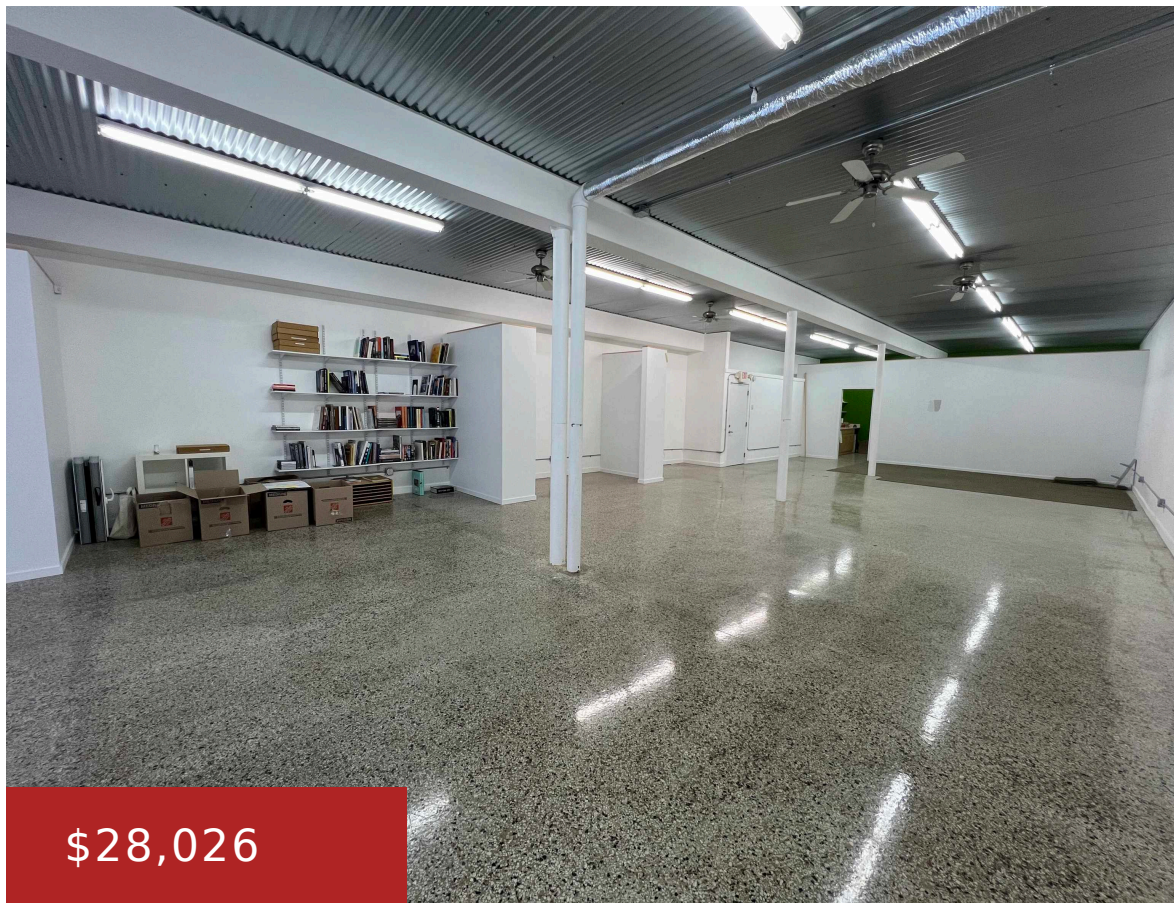


1021 PARK S, MADISON, WI, 53715-1747

https://www.adashunjones.com

1021 Park S,  
Madison, WI,  
53715-1747



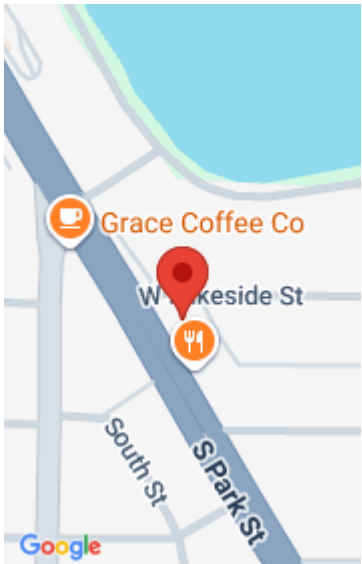
\$28,026

1,577sf of nicely finished office/retail space in downtown Madison on Park St with great visibility. Polished floors and a metal ceiling make the space feel very clean and comfortable. There's a shared kitchenette and bathrooms. Tenants pay electric. No private parking. \$2,335/mo plus electric.

- Active
- 8897 sq ft



**Mitch Marty**  
ALTUS Commercial Real Estate, Inc.



---

## Features

<b>GarageYN:</b> No	<b>AttachedGarageYN:</b> No
<b>FireplaceYN:</b> No	<b>PoolPrivateYN:</b> No
<b>Lot Features:</b> 0.137	<b>Tax Year:</b> 2024
<b>Tax Amount:</b> 18416	

---

## Amenities

<b>Waterfront available:</b> No	<b>Cooling:</b> Central Air
<b>Water Source:</b> Public	<b>Sewer:</b> Public Sewer

---

## Building Details

<b>NewConstructionYN:</b> No	<b>Heating:</b> Natural Gas
<b>Exterior material:</b> Concrete,Stucco	<b>Roof:</b> Metal

---

## Agent Details

<b>Agent Full Name:</b> Mitch Marty	<b>Agent Email:</b> mitch.marty@altuscre.com
-------------------------------------	--