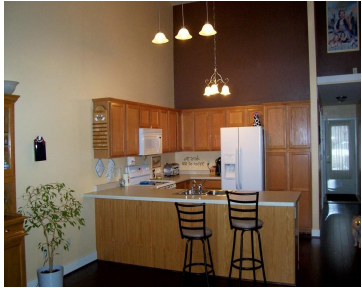
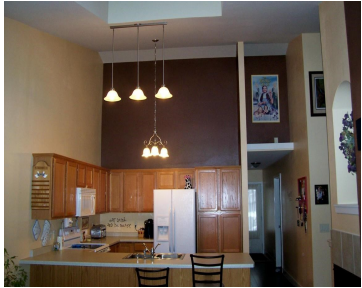


1020 PROSPECT AVENUE, WI, 53901
<https://www.adashunjones.com>

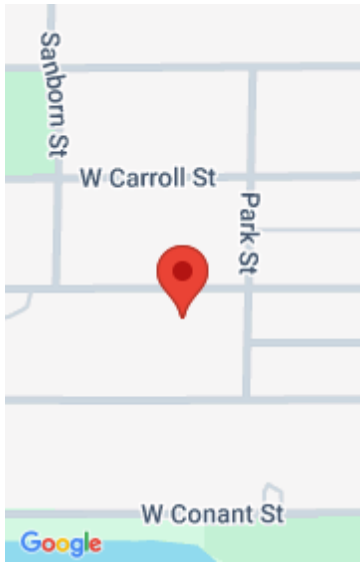
1020 Prospect
Avenue, WI, 53901



\$112,000

Portage Highland Condos. Wonderful 2Br, 2BA Ranch designed after the prairie Style Architecture. See through gas fireplace between living rm and dining rm. 1st floor laundry, breakfast bar-vaulted ceilings-sky light. Private covered entrance. Full basement. Easy to heat and cool, each unit has their own private patio. Only 2 blocks from Wisconsin River, 25 min...

- 2 beds
- 2 baths
- Condominium,R1
- Sold
- 1275 sq ft



Features

GarageYN: Yes

FireplaceYN: Yes

WindowFeatures: Skylight(s)

Features: Accessible Bedroom, Accessible Entrance, Accessible Full Bath, Accessible Hallway(s), Gas, Kitchen Island, Main Level, Vaulted Ceiling(s)

Tax Year: 2013

Inclusions: Some Window Coverings

AttachedGarageYN: Yes

PoolPrivateYN: No

Utilities: Cable Available

Above Grade Finished Area, sq ft: 1275

Tax Amount: 2363

Amenities

Waterfront available: No

Cooling:
Central Air

Amenities: Dishwasher, Disposal, Microwave, Range, Refrigerator, Water Softener Owned

Water Source:
Public

Sewer: Public Sewer

Building Details

NewConstructionYN: No

Heating: Forced Air, Natural Gas

Basement: Full, Sump Pump

Exterior material: Brick, Stone, Vinyl Siding, Wood Siding

Parking: Attached, Garage, Garage Door Opener

Agent Details

Agent Full Name: Peggy Joyce*

Agent Email: peggyjoyce@realtyexecutives.com