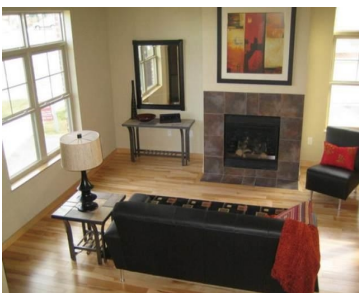


10 HALITE WAY, WI, 53711

<https://www.adashunjones.com>

10 Halite Way, WI,  
53711



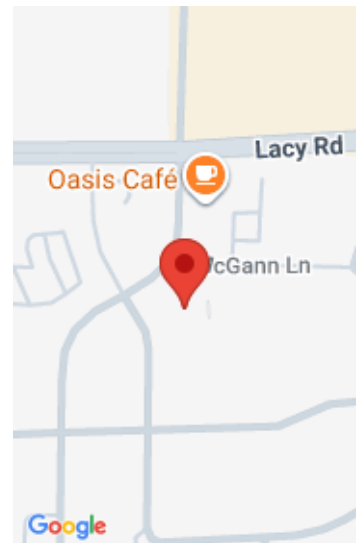
\$189,900

Urban loft-style town home offering a spacious floor plan with 10 foot main floor ceilings! Parade quality interior finishes include great room gas fireplace, maple floors, hickory cabinets, granite and stainless kitchen and much more! Includes 2 heated underground parking spaces and 2 storage units! Excellent linkages to Madison’s downtown and all that Fitchburg has...

- 2 beds
- 2 baths
- Condominium,PUD
- Sold
- 1520 sq ft



**Cari Wuebben**  
Encore Real Estate Services, I



---

## Features

**GarageYN:** No

**FireplaceYN:** Yes

**Utilities:** Cable Available

**Above Grade Finished Area, sq ft:** 1520

**Tax Amount:** 4342

**AttachedGarageYN:** No

**PoolPrivateYN:** No

**Features:** Gas,Kitchen Island,Upper Level

**Tax Year:** 2013

**Inclusions:** All window coverings

---

## Amenities

**Waterfront available:** No

**Cooling:**  
Central Air

**Amenities:**

Dishwasher,Disposal,Dryer,Microwave,Range,Refrigerator,Washer,Water Softener  
Owned

**Water  
Source:**  
Public

**Sewer:** Public Sewer

---

## Building Details

**NewConstructionYN:** No

**Heating:** Forced Air, Natural Gas

**Basement:** None

**Exterior material:** Brick,Fiber  
Cement,Stone

**Parking:** Assigned,Garage Door Opener,Underground

---

## Agent Details

**Agent Full Name:** Cari Wuebben

**Agent Email:** cari.wuebben@encorehomesinc.com