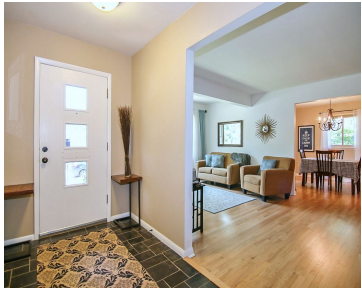


1 HEMPSTEAD PLACE, MADISON, WI, 53711

https://www.adashunjones.com

1 HEMPSTEAD
Place, Madison, WI,
53711



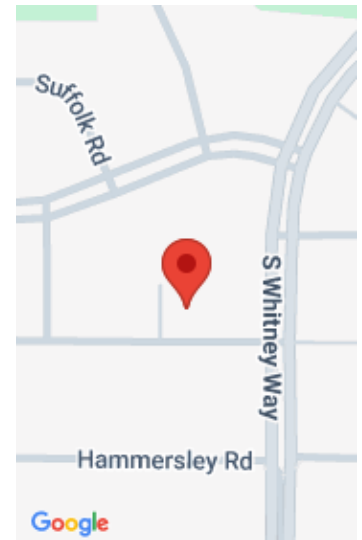
\$269,900

Tucked away on a cul-de-sac, this amazing custom ranch home is in immaculate condition and sits on a wooded, fenced 1/3 acre lot! Loaded with upgrades and great features including hardwood floors (recently refinished) thruout the main level, newer maple cabinets, a wonderful 3-season room with a fireplace, and beautiful outdoor space. Spacious floor plan...

- 3 beds
- 2 baths
- SR-C1
- Sold
- 2253 sq ft



Lynn Holley
Keller Williams Realty



Features

GarageYN: Yes

FireplaceYN: Yes

Lot Features: Cul-De-Sac, Corner Lot, Near Public Transit

Features: Accessible Bedroom, Accessible Full Bath, Accessible Hallway(s), Cable Available, Dryer, Lower Level, Washer, Water softener inc, Wood Burning

Below Grade Finished Area, sq ft: 587

Tax Amount: 4961

AttachedGarageYN: Yes

PoolPrivateYN: No

Utilities: Cable Available

Above Grade Finished Area, sq ft: 1666

Tax Year: 2014

Inclusions: Some Window Coverings

Amenities

Waterfront available: No

Amenities:

Dishwasher, Disposal, Dryer, Microwave, Range, Refrigerator, Washer, Water Softener Owned

Sewer: Public Sewer

Cooling:
Central Air

Water Source:
Public

Building Details

NewConstructionYN: No

Basement: Full, Partially Finished

Parking: Additional Parking, Attached, Garage Door Opener, Heated Garage, Paved

Heating: Forced Air, Natural Gas

Exterior material: Wood Siding

Agent Details

Agent Full Name: Lynn Holley

Agent Email: lholley7403@gmail.com