



Fond du Lac
920-923-4433

Oshkosh
920-235-0095

Fox Valley
920-202-8360

Green Lake
920-294-0121



www.adashunjones.com



Therese Massey
Cell: (920) 251-3358
therese@adashunjones.com

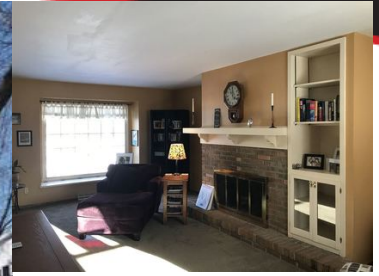
Est. Monthly Payment

(Based on 10% down payment)

15 yr. mortgage: \$1,376.30

20 yr. mortgage: \$1,138.20

30 yr. mortgage: \$911.58



Open House 01.21.18 Sun 11:00 - 12:00 PM CST

838 ELLEN LN FOND DU LAC WI 54935

\$199,900

MLS# 50176207

Here it is: 4 bedrooms, 2.5 baths and a ton of living space at a great price! This two story offers a living room and a family room with fireplaces, a dining room and a super kitchen with access to the deck! A finished lower level makes you forget its winter. A super location near Buttermilk Creek Park, elementary and middle schools and shopping makes this home the perfect choice!

FEATURES

County
Muni.
Acreage
Source of Acreage Info
Lot Size
Source of Lot Size Info
Zoning
Taxes (2017)
Total Sq. Ft.
Above Grade Sq. Ft.
Below Grade Sq. Ft.
Age/Year Built
Exterior Finish
Style
School Dist.
Elementary School
Middle School
High School

Fond du Lac
City of Fond du Lac
0.29
Assessor/Public Record
104x130
Assessor/Public Record
Residential
4,251
2,954
2,054
900
1973
Brick, Pressboard
2 Story
Fond du Lac
Pier
Theisen
Fond du Lac

AMENITIES

Type.
Heating/Cooling
Waste
Water
Basement
Garage Style
Garage Spaces
Garage Total
Misc. Exterior

Residential
Central A/C, Forced Air
Municipal Sewer
Municipal Public Water
Poured Concrete
Attached
2 Car
2
Deck

INCLUSIONS / EXCLUSIONS

Inclusions: Range, Refrigerator, Microwave, Water Softener
Exclusions: Washer & Dryer

DIRECTIONS

South on Park Avenue, East on Old Pioneer Road, South on Ellen Lane to Address.

ROOM SIZES

Room, Dimensions, Level
Master Bedroom, 14x13, Upper
Bedroom 2, 11x10, Upper
Bedroom 3, 15x9, Upper
Bedroom 4, 12x9, Upper
Family Room, 16x11, Main

Room, Dimensions, Level
Laundry Room, 9x6, Main
Kitchen, 21x12, Main
Formal Dining Room, 11x10, Main
Living Room, 23x13, Main
Rec Room, 22x20, Lower



In our opinion the information on this sheet is true but not guaranteed, and is subject to change or correction at any time.

